

TECHNICAL MANUAL

**ORGANIZATIONAL, DIRECT SUPPORT, AND GENERAL SUPPORT
MAINTENANCE REPAIR PARTS AND SPECIAL TOOLS LIST
FOR
AM/FM MODULATION METER ME-525A/USM
(NSN 6625-01-161-1459)**

HEADQUARTERS, DEPARTMENT OF THE ARMY

28 MAY 1985

TECHNICAL MANUAL }
No. 11-6625-3059-24P }

HEADQUARTERS
DEPARTMENT OF THE ARMY
WASHINGTON, DC, 28 May 1985

**ORGANIZATIONAL, DIRECT SUPPORT, AND GENERAL SUPPORT
MAINTENANCE REPAIR PARTS AND SPECIAL TOOLS LIST
FOR
AM/FM MODULATION METER ME-525A/USM
(NSN 6625-01-161-1459)
Current as of 2 January 1985**

REPORTING ERRORS AND RECOMMENDING IMPROVEMENTS
You can help improve this manual. If you find any mistakes or if you know of a way to improve the procedures, please let us know. Mail your letter, DA Form 2028 (Recommended Changes to Publications and Blank Forms), or DA Form 2028-2 located in back of this manual direct to: Commander, US Army Communications-Electronics Command and Fort Monmouth, ATTN: AMSEL-ME-MP, Fort Monmouth, NJ 07703-5007.
In either case, a reply will be furnished direct to you.

Table of Contents

	Page	Illus Figure
SECTION I. Introduction.....	1	
II. Repair Parts List.....	1-1	
GROUP 00 AM/FM Modulation Meter, ME-525A/USM, Front View.....	1-1	1
AMIFM Modulation Meter, ME-525A/USM, Rear View	2-1	2
AMIFM Modulation Meter, ME-525A/USM, Top View Cover Removed	3-1	3
Front Panel Assembly	4-1	4
Cover and Handle Assembly.....	5-1	5
RF Housing Assembly.....	6-1	6
01 Circuit Card Assembly RF (A3)	7-1	7
02 Circuit Card Assembly Master (A6).....	8-1	8
03 Circuit Card Assembly Audio (A9).....	9-1	9
04 Circuit Card Assembly FM(A10).....	10-1	10
05 Circuit Card Assembly AM (A10).....	11-1	11
SECTION III. Special Tools List		
GROUP 60 Special Tools for General Support	12-1	12
SECTION IV. National Stock Number and Part Number Index	1-1	

*This manual supersedes TM 11-6625-3059-24P, 12 December 1983.

SECTION I

INTRODUCTION

1. Scope

This manual lists and authorizes spares and repair parts; special tools; special test, measurement, and diagnostic equipment (TMDE); and other special support equipment required for performance of organizational, direct support, and general support maintenance of the ME-525A/USM. It authorizes the requisitioning, issue, and disposition of spares, repair parts and special tools as indicated by the source, maintenance and recoverability (SMR) codes.

2. General

This Repair Parts and Special Tools List is divided into the following sections:

a. Section II. Repair Parts List. A list of spares and repair parts authorized by this RPSTL for use in the performance of maintenance. The list also includes parts which must be removed for replacement of the authorized parts. Parts lists are composed of functional groups in ascending numeric sequence, with the parts in each group listed in ascending item number sequence. Figure numbers are listed directly beneath the group header.

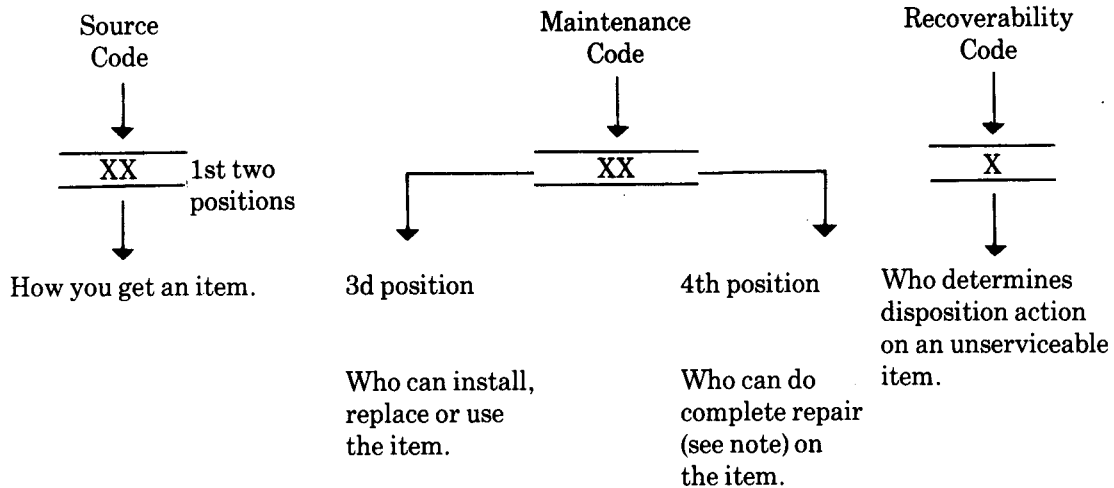
b. Section III. Special Tools List. A list of special tools, special TMDE, and other special support equipment authorized by this RPSTL (as indicated by Basis of Issue (BOI) information in (column (5)) for the performance of maintenance.

c. Section IV. National Stock Number and Part Number Index. A list, in National item identification number (NIIN) sequence, of all National stock numbered items appearing in the listing, followed by a list in alphanumeric sequence of all part numbers appearing in the listings. National stock numbers and part numbers are cross-referenced to each illustration figure and item number appearance.

3. Explanation of Columns (Section II and III)

a. Item No. (Column (1)). Indicates the number used to identify items called out in the illustration.

b. SMR Code (Column (2)). The source, maintenance, and recoverability (SMR) code is a five-position code containing supply/requisitioning information, maintenance category authorization criteria, and disposition instruction, as shown in the following breakout:



NOTE

Complete repair: Maintenance capacity, capability, and authority to perform all corrective maintenance tasks of the "Repair" function in a use/user environment in order to restore serviceability to a failed item.

(1) Source code. The source code tells you how to get an item needed for maintenance, repair, or overhaul of an end item/equipment. Explanations of source codes follows:

PA
PB
PC
PD
PE
PF
PG

Stocked items; use the applicable NSN to request/requisition items with these source codes. They are authorized to the category indicated by the code entered in the third position of the SMR code

NOTE

Items coded PC are subject to deterioration.

Items with these codes are not to be requested/requisitioned individually. They are part of a kit which is authorized to the maintenance category indicated in the third position of the SMR code. The complete kit must be requisitioned and applied.

KD
KF
KB

MO—Made at org/
AVUM category
MF—Made at DS/
AVUM category
MH—Made at GS
category
ML—Made at
Specialized
Repair Activity
(SRA)
MD—Made at Depot

Items with these codes are not to be requested/requisitioned individually. They must be made from bulk material which is identified by the part number in the description and usable on code (UOC) column and listed in the Bulk Material group of the repair parts list. If the item is authorized to you by the third position code of the SMR code, but the source code indicates it is made at a higher category, order the item from the higher category of maintenance.

AO —Assembled by
org/AVUM
category
AF —Assembled by
DS/AVUM
category
AH —Assembled by
GS category
AL —Assembled by
SRA
AD —Assembled by
Depot

Items with these codes are not to be requested/requisitioned individually. The parts that make up the assembled item must be requisitioned or fabricated and assembled at the category of maintenance indicated by the source code. If the disposition code of the SMR code authorizes you to replace the item, but the source code indicates the item is assembled at a higher category, order the item from the higher category of maintenance.

Code	Explanation
XA	Do not requisition an "XA" coded item. Order its next higher assembly.
XB	If an "XB" item is not available from salvage, order it using the FSCM and part number given.
XC	Installation drawing, diagram, instruction sheet, field service drawing, that is identified by manufacturers part number.
XD	Item is not stocked. Order an "XD" coded item through normal supply channels using the FSCM and part number given, if no NSN is available.

NOTE

Cannibalization or controlled exchange, when authorized, may be used as a source of supply for items with the above source codes, except for those source coded "XA" or those aircraft support items restricted by requirements of AR 750-1.

(2) Maintenance code. Maintenance codes tell you the category of maintenance authorized to USE and REPAIR support items. The maintenance codes are entered in the third and fourth positions of the SMR code as follows:

(a) The maintenance code entered in the third position tells you the lowest maintenance category authorized

to remove, replace, and use an item. The maintenance code entered in the third position will indicate authorization to one of the following categories of maintenance.

<i>Code</i>	<i>Application/Explanation</i>
C-Crew or operator maintenance done within organizational or aviation maintenance.	
O-Organizational or aviation unit category can remove, replace, and use the item.	
F-Direct support or aviation intermediate category can remove, replace, and use the item.	
H-General support category can remove, replace, and use the item.	
L-Specialized repair activity can remove, replace, and use the item.	
D-Depot category can remove, replace, and use the item.	

(b) The maintenance code entered in the fourth position tells whether or not the item is to be repaired and identifies the lowest maintenance category with the capability to do complete repair (i.e., perform all authorized repair functions). This position will contain one of the following maintenance codes.

NOTE

Some limited repair may be done on the item at a lower category of maintenance, if authorized by the Maintenance Allocation Chart (MAC) and SMR codes.

<i>Code</i>	<i>Application/Explanation</i>
O-Organizational or aviation unit is the lowest category that can do complete repair of the item.	
F-Direct support or aviation intermediate is the lowest category that can do complete repair of the item.	
H-General support is the lowest category that can do complete repair of the item.	
L-Specialized repair activity (designate the specialized repair activity) is the lowest category that can do complete repair of the item.	
D-Depot is the lowest category that can do complete repair of the item.	
Z-Nonreparable. No repair is authorized.	
B-No repair is authorized. (No parts or special tools are authorized for the maintenance of a "B" coded item). However, the item may be reconditioned by adjusting, lubricating, etc., at the user category.	

(3) Recoverability code. Recoverability codes are assigned to items to indicate the disposition action on unserviceable items. The recoverability code is entered in the fifth position of the SMR Code as follows:

<i>Recoverability Codes</i>	<i>Application/Explanation</i>
Z--Nonreparable Item. When unserviceable, condemn and dispose of the item at the category of maintenance shown in the third position of SMR Code.	
O-Reparable item. When uneconomically repairable, condemn and dispose of the item at organizational or aviation unit category.	
F-Reparable item. When uneconomically repairable, condemn and dispose of the item at direct support or aviation intermediate category.	
H-Reparable item. When uneconomically repairable, condemn and dispose of the item at general support category.	
D-Reparable item. When beyond lower category repair capability, return to depot. Condemnation and disposal of item not authorized below depot category.	
L-Reparable item. Condemnation and disposal not authorized below specialized repair activity (SRA).	
A-Item requires special handling or condemnation procedures because of specific reasons (e.g., precious metal content, high dollar value, critical material, or hazardous material). Refer to appropriate manuals/directives for specific instructions.	

c. FSCM (Column (3)). The Federal Supply Code for Manufacturer (FSCM) is a 5-digit numeric code which is used to identify the manufacturer, distributor, or Government agency, etc., that supplies the item.

d. Part Number (Column (4)). Indicates the primary number used by the manufacturer (individual, company, firm, corporation, or Government activity), which controls the design and characteristics of the item by means of its engineering drawings, specifications, standards, and inspection requirements to identify an item or range of items.

NOTE

When you use a NSN to requisition an item, the item you receive may have a different part number from the part ordered.

e. Description and Usable on Code (UOC) (Column (5)). This column includes the following information.

(1) The Federal item name and, when required, a minimum description to identify the item.

(2) In the Special Tools section, the basis of issue (BOI) appears as the last line in the entry for each special tool, special TMDE, and other special support equipment. When density of equipment's supported exceeds density spread indicated in the basis of issue, the total authorization is increased proportionately.

(3) The statement "END OF FIGURE" appears just below the last item description in Column (5) for a given figure in both section II and section III.

f. Qty (Column (6)). Indicates the quantity of the item used in the breakout shown on the illustration figure, which is prepared for a functional group, subfunctional group, or an assembly. A 'N' appearing in this column in lieu of a quantity indicates that the quantity is variable and the quantity may vary from application to application.

4. Explanation of Columns (Section IV)

a. National Stock Number (NSN) Index.

(1) Stock number column. This column lists the NSN by National item identification number (NIIN) sequence. The NIIN consists of the last nine digits of the NSN. When using this column to locate an item, ignore the first four digits of the NSN. When requisitioning items use the complete NSN (13 digits).

(2) Fig. column. This column lists the number of the figure where the item is identified/located. The illustrations are in numerical sequence in sections II and III.

(3) Item column. The item number identifies the item associated with the figure listed in the adjacent Fig. column. This item is also identified by the NSN listed on the same line.

b. Part Number Index. Part numbers in this index are listed by part number in ascending alphanumeric sequence.

(1) FSCM column. This column lists the Federal supply code for manufacturer (FSCM).

(2) Part number column. This column indicates the part number assigned to the item.

(3) Stock number column. This column lists the National stock number for the associated part number and manufacturer identified in the part number and FSCM columns to the left.

(4) Fig. column. This column lists the number of the figure where the item is identified/located in sections II and III.

(5) Item column. The item number is that number assigned to the item as it appears in the figure referenced in the adjacent figure number column.

5. Special Information

a. Associated Publications. The publications listed below pertain to the ME-525A/USM and its components:

TM 11-6625-3059-10, AM/FM Modulation Meter ME-525A/USM. (To be published).

TM 11-6625-3059-24, AM/FM Modulation Meter ME-525A/USM. (To be published.)

b. National Stock Numbers. National stock numbers (NSN's) that are missing from P source coded items have been applied for and will be added to this TM by future change/revision when they are entered in the Army Master Data File (AMDF). Until the NSN's are established and published, submit exception requisitions to: Commander, US Army Communications-Electronics Command and Fort Monmouth, ATTN: AMSEL-MM, Fort Monmouth, NJ 07703-5006 for the part required to support your equipment.

6. How to Locate Repair Parts

a. When National stock number or part number is not known.

(1) First. Using the table of contents, determine the assembly group or subassembly group to which the item belongs. This is necessary since figures are prepared for assembly groups and subassembly groups, and listings are divided into the same groups.

(2) Second. Find the figure covering the assembly group or subassembly group to which the item belongs.

(3) Third. Identify the item on the figure and note the item number.

(4) Fourth. Refer to the Repair Parts List for the figure to find the part number for the item number noted on the figure.

(5) Fifth. Refer to the Part Number Index to find the NSN, if assigned.

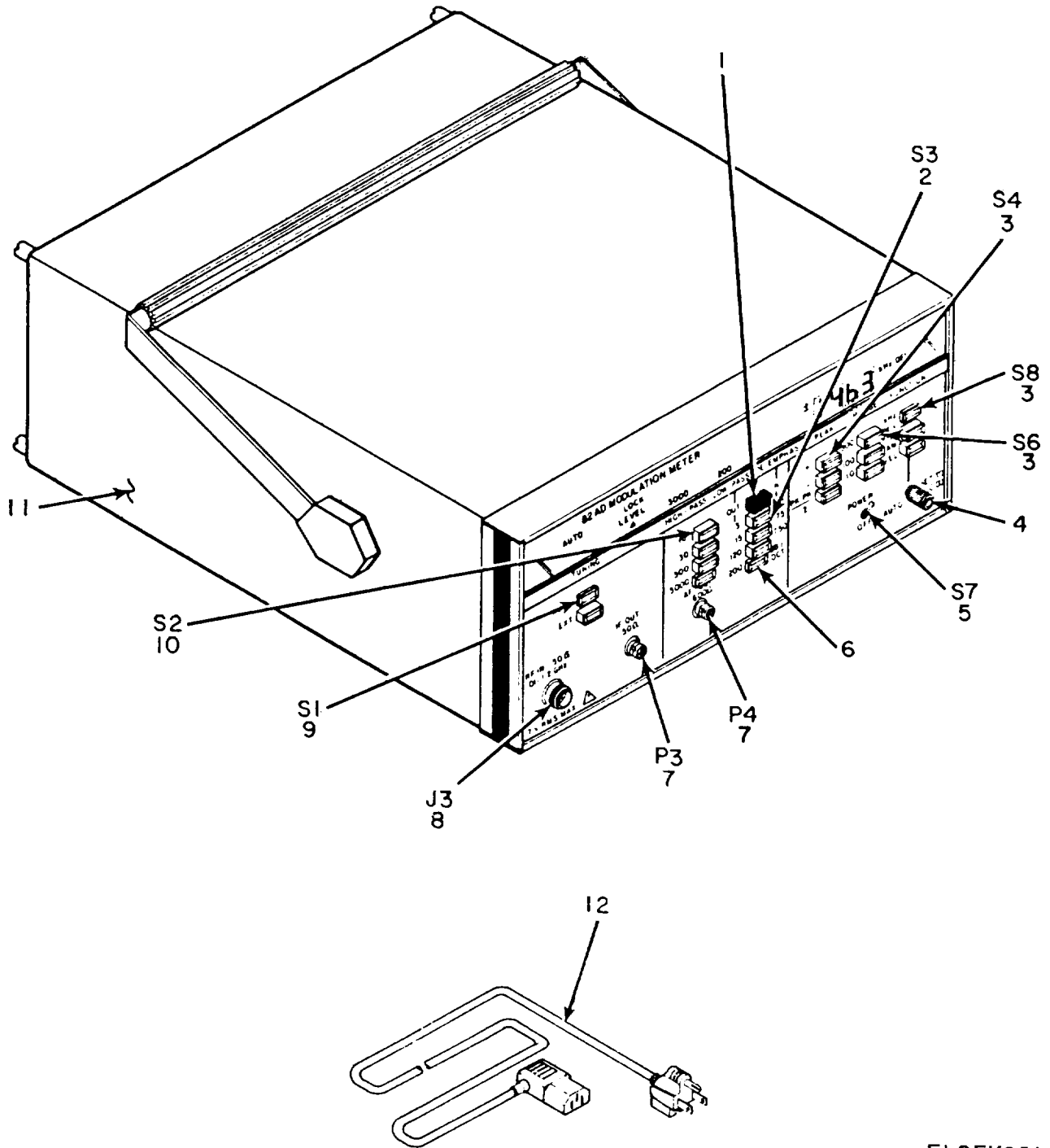
b. When National stock number or part number is known.

(1) First. Using the index of National stock numbers and part numbers, find the pertinent National stock number or part number. The NSN index is in National item identification number (NIIN) sequence (para 4a(1)). The part numbers in the part number index are listed in ascending alphanumeric sequence (para 4b). Both indexes cross-reference you to the illustration figure and item number of the item you are looking for.

(2) Second. After finding the figure and item number, verify that the item is the one you're looking for, then locate the item number in the repair parts list for the figure.

7. Abbreviations

Not applicable.

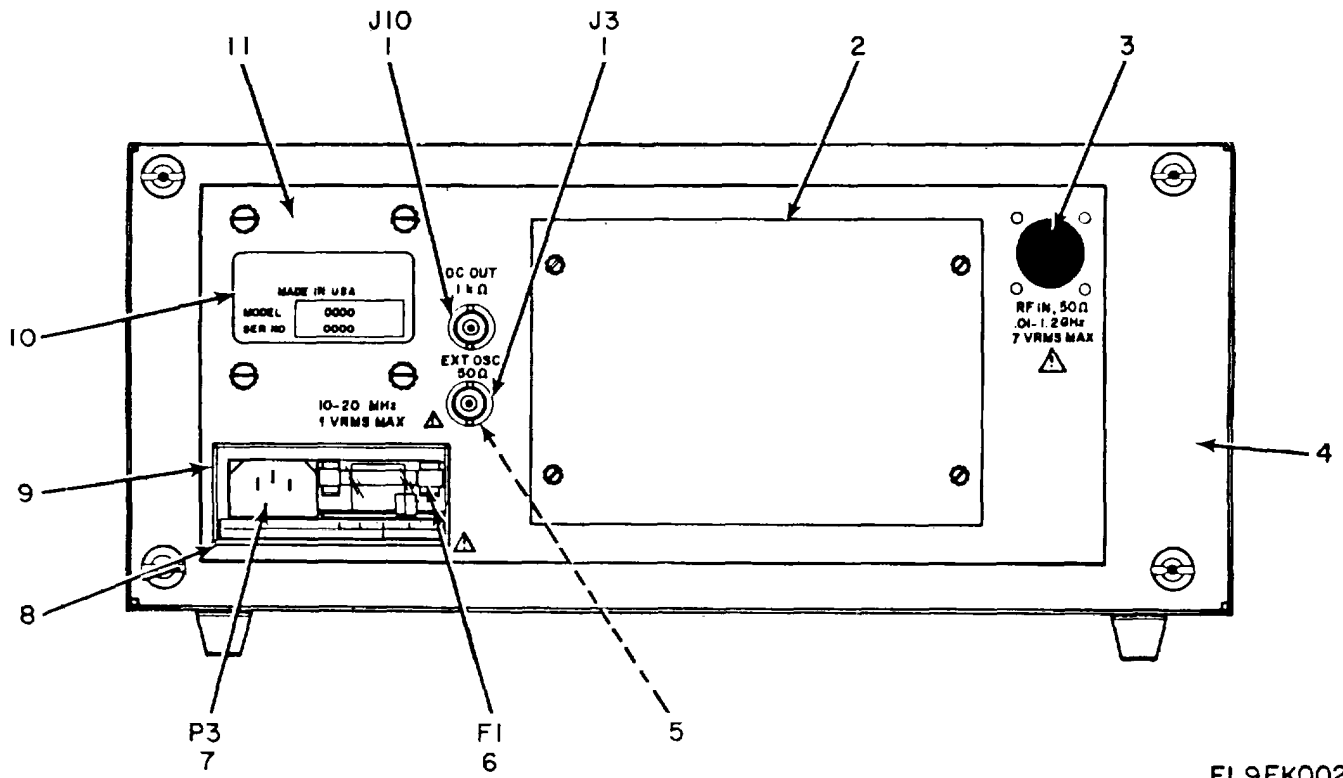


EL9FK001

Figure 1. AM/FM MODULATION METER ME-525A/USM, FRONT VIEW.

(1) ITEM NO	(2) SMR CODE	(3) FSCM	(4) PART NUMBER	(5) DESCRIPTION AND USABLE ON CODES (UOC) GROUP 00 AM/FM MODULATION METER ME-525A/USM, FRONT VIEW	(6) QTY
FIG 1					
1	PAZZ	04901	B-303GR	PUSH BUTTON	1
2	PAZZ	71590	PB10-5-MOD	SWITCH,PUSH	1
3	PAZZ	71590	PB10-3-MOD	SWITCH,PUSH	3
4	PAZZ	04901	SSN-501-2-LT-GR	KNOB	1
5	PAZZ	09353	U21-SHZQE	SWITCH,TOGGLE	1
6	PAZZ	04901	B-303WT	PUSH BUTTON	19
7	PAZZ	19505	17-02-19-000	CONNECTOR	2
8	PAZZ	24931	29JJO11-1	ADAPTER,CONNECTOR	1
9	PAZZ	71590	PB10-2-MOD	SWITCH,PUSH	1
10	PAZZ	71590	PB10-4-MOD	SWITCH,PUSH	1
11	XBHHH	04901	082017-1	CASE ASSY	2
12	PAZZ	70903	CH9461	CORD,FIBROUS	1

END OF FIGURE



EL9FK002

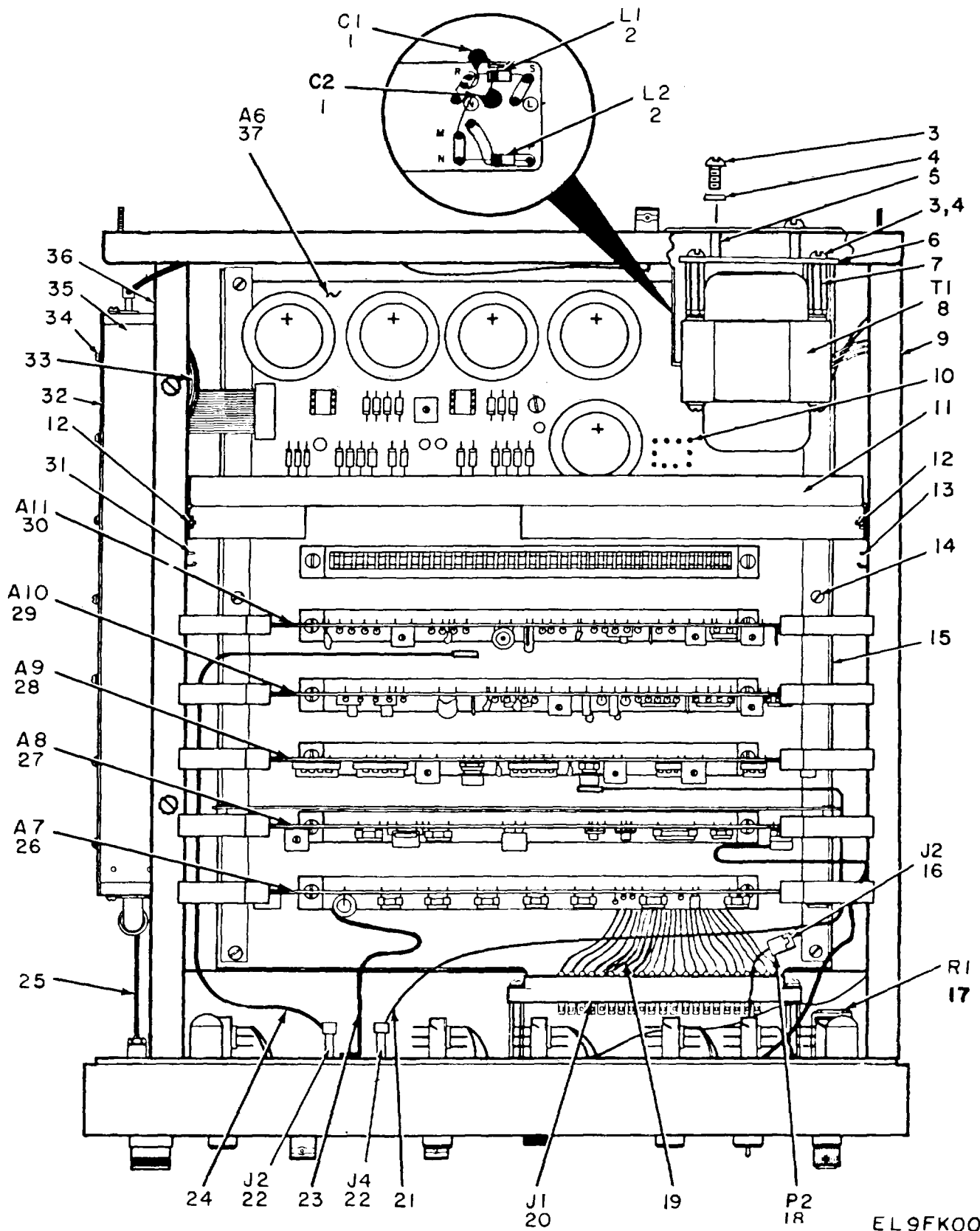
Figure 2. AM/FM MODULATION METER ME-525A/USM, REAR VIEW

SECTION II

TM11-6625-3059-24P

(1) ITEM NO	(2) SMR CODE	(3) FSCM	(4) PART NUMBER	(5) DESCRIPTION AND USABLE ON CODES (UOC) GROUP 00 AM/FM MODULATION METER ME-525A-USM, REAR VIEW	(6) QTY
FIG 2					
1	PAHZZ	80058	UG-625/U	CONNECTOR,RECEPTACL	2
2	XBHZZ	04901	720800	COVER PLATE	1
3	PAHZZ	04901	755117	BUTTON,PLUG	1
4	XBHHH	04901	604503	REAR PANEL UNIT	1
5	XBHZZ	04901	500130	LUG.....	2
6	PAOZZ	81349	F02B250VI-2A	FUSE,CARTRIDGE USED FOR 100/120 VOLT OPERATION	1
6	PAOZZ	81349	F028125V6-1/4A	FUSE USED FOR 220/240 VOLT OPERATION.....	1
7	PAHZZ	05245	F-65001	CONNECTOR,ELECTRICA	1
8	XBHZZ	04901	782516	LABEL.....	1
9	XBHZZ	04901	730685	COVER POWER CONN	1
10	XBHZZ	04901	780211	NAMEPLATE	1
11	XBHZZ	04901	082003-1	REAR PANEL ASSEMBLY	1

END OF FIGURE



EL 9FK003

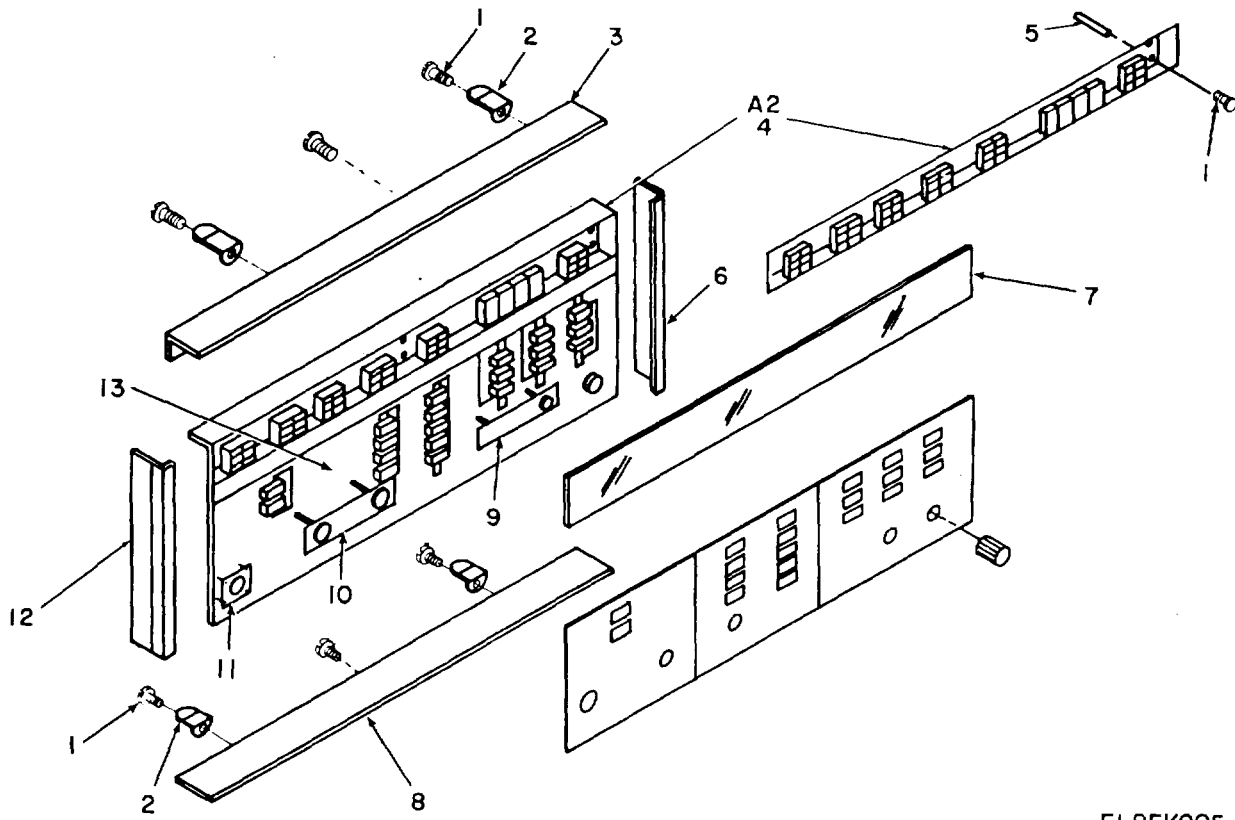
Figure 3. AM/FM MODULATION METER ME-525A/USM, TOP VIEW.

SECTION II

TM11-6625-3059-24P

(1) ITEM NO	(2) SMR CODE	(3) FSCM	(4) PART NUMBER	(5) DESCRIPTION AND USABLE ON CODES (UOC) GROUP 00 AM/FM MODULATION METER ME-525A/USM, TOP VIEW COVER REMOVED	(6) QTY
FIG 3					
1	PAHZZ	91418	0.001UF20XIKVD	CAPACITOR, FIXED, CER	2
2	PAHZZ	78429	4425-6K	INDUCTOR	2
3	XBHZZ	96906	MS35206-243	SCREW, MACHINE	4
4	XBHZZ	96906	MS35335-59	WASHER, LOCK	4
5	PAHZZ	04901	742317	INSULATOR, STANDOFF	4
6	XBHZZ	04901	720803	TRANSFORMER SHIELD	1
7	PAHZZ	04901	745229	INSULATOR, STANDOFF	4
8	PAHZZ	04901	446081	TRANSFORMER, POWER	1
9	XBHHH	04901	604501	BRACKET ASSY LEFT	1
10	XBHZZ	04901	479320	PIN TERM.	14
11	XBHZZ	04901	604505	PARTITION BRACKET	1
12	XBHZZ	04901	745202	STUD	2
13	XBHZZ	04901	483202	GUIDE CAR	6
14	XBHZZ	88044	AN505C4R6	SCREW FLAT HD	4
15	XBHZZ	04901	604498	BRACKET RIGHT	1
16	XAFZZ	27264	03-06-1043M0L200	CONNECTOR	1
17	PAHZZ	81349	RV4NAYS BIO3A	RESISTOR, VARIABLE, N	1
18	PAHZZ	27264	03-06-2041	CONNECTOR, RECEPTACL	1
19	PAHZZ	04901	569190	HARNESS	1
20	PAHZZ	81349	M21091/21-163	CONNECTOR, RECEPTACL	1
21	PAHZZ	04901	572049	CABLE UNIT	2
22	PAHZZ	80058	UG-625/U	CONNECTOR, RECEPTACL	2
23	PAHZZ	04901	920023	FLAT CABLE UNIT	2
24	PAHZZ	04901	572048	CABLE UNIT	1
25	PAHZZ	04901	572038	CABLE UNIT	1
26	PAHZZ	04901	082011-1	CIRCUIT CARD ASSEMB	1
27	PAHZZ	04901	082012-1	CIRCUIT CARD ASSEMB	1
28	PAHHH	04901	082013-1	PRINTED CIRCUIT BOA	1
29	PAHHH	04901	082014-1	PRINTED CIRCUIT BOA	1
30	PAHHH	04901	082015-1	PRINTED CIRCUIT BOA	1
31	XBHZZ	04901	483202	GUIDE CARD	6
32	XBHZZ	04901	602969	COVER, RF HOUSING	1
33	PAHZZ	04901	920021	FLAT CABLE UNIT	1
34	XBHZZ	96906	MS35216-13	SCREW	4
35	XBHHH	04901	082006-1	RF HOUSING ASSY	1
36	XBHHH	04901	604502	BRACKET ASSY RIGHT	1
37	PAHHH	04901	082010-1	PRINTED CIRCUIT BOA	1

END OF FIGURE



EL9FK005

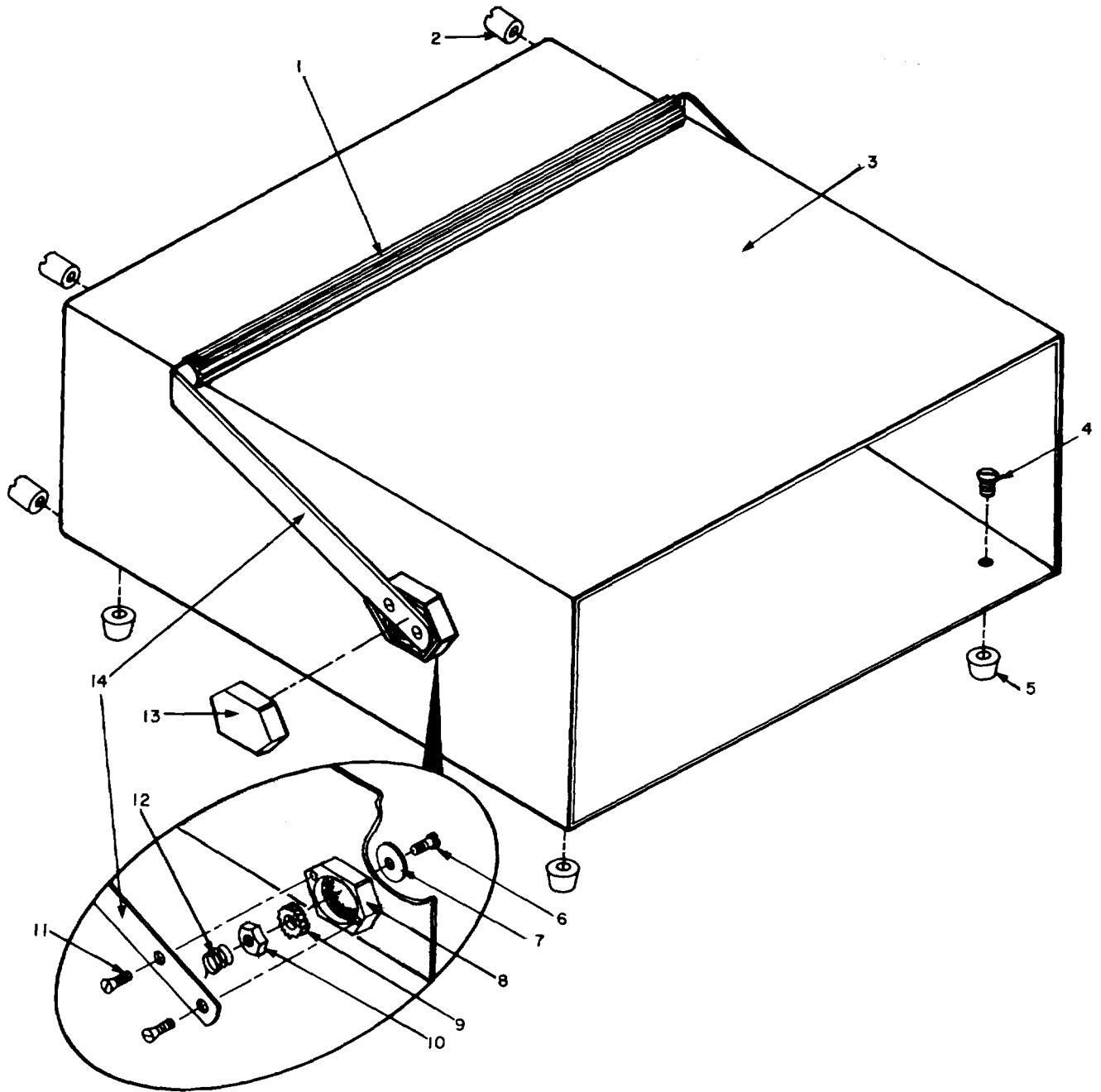
Figure 4. FRONT PANEL ASSEMBLY.

SECTION II

TM11-6625-3059-24P

(1) ITEM NO	(2) SMR CODE	(3) FSCM	(4) PART NUMBER	(5) DESCRIPTION AND USABLE ON CODES (UOC) GROUP 00 FRONT PANEL ASSEMBLY	(6) QTY
FIG 4					
1	XBHZZ	96906	MS352t6-16	SCREW	9
2	PAHZZ	04901	822164	SPRING	4
3	XBHZZ	04901	604495	STRIP,TRIM TOP.	1
4	PAHZZ	04901	082005-1	PRINTED CIRCUIT BOA	1
5	PAHZZ	04901	745217	INSULATOR,STANDOFF	6
6	XBHZZ	04901	730682	STRIP TRIM LEFT	1
7	XBHZZ	04901	777052	DISPLAY PANEL UNIT	1
8	XBHZZ	04901	604496	STRIP,TRIM BOTTOM	1
9	XBHZZ	04901	604497	SUPPORT PANEL	1
10	XBHZZ	04901	720805	PLATE SUPPORT	1
11	XBHZZ	04901	742316	SPACER	4
12	XBHZZ	04901	730681	STRIP TRIM RIGHT	1
13	XBHZZ	04901	082004-1	SUB PANEL ASSY	1

END OF FIGURE



EL9FK007

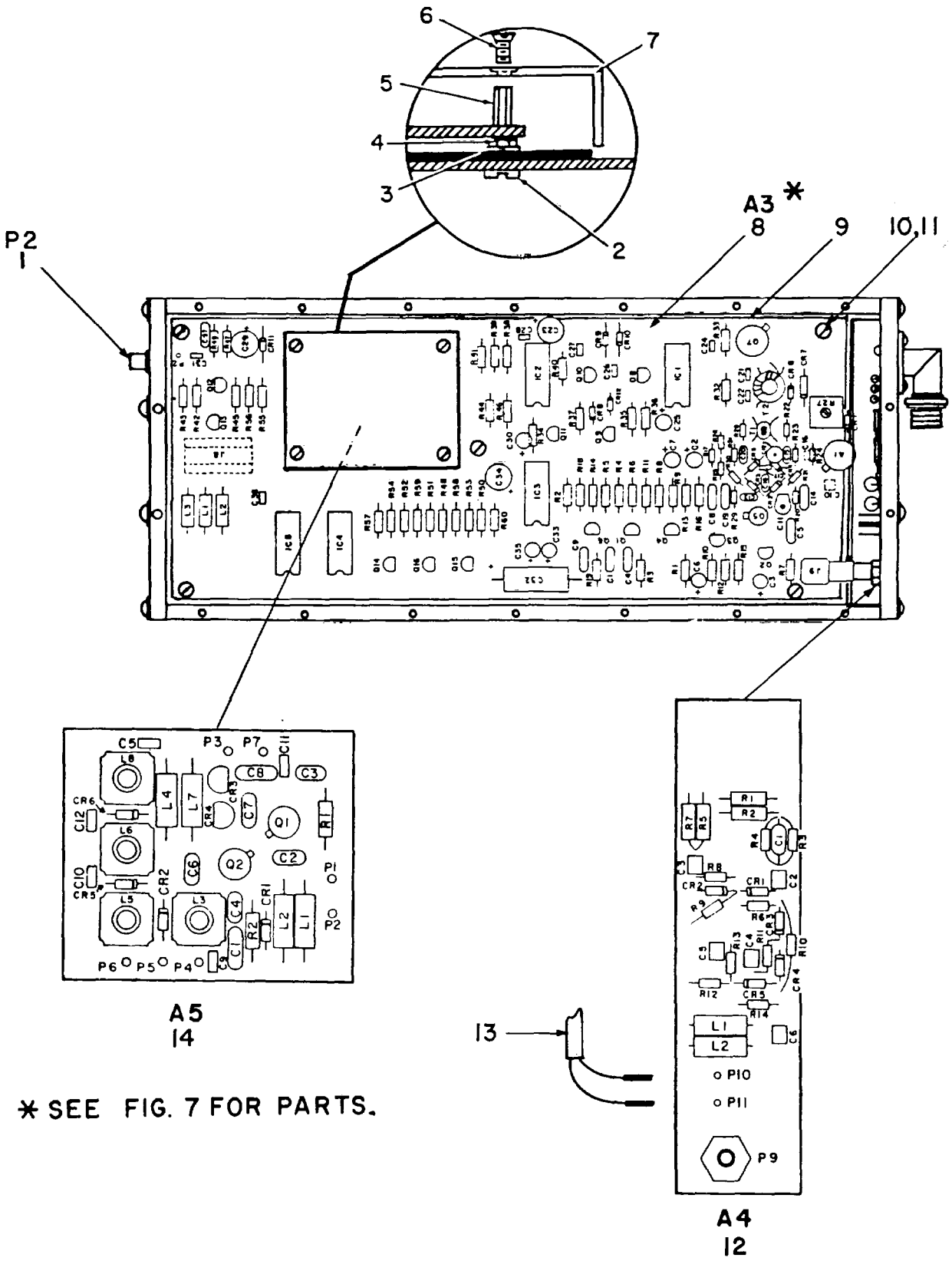
Figure 5. COVER AND HANDLE ASSEMBLY

SECTION II

TM11-6625-3059-24P

(1) ITEM NO	(2) SMR CODE	(3) FSCM	(4) PART NUMBER	(5) DESCRIPTION AND USABLE ON CODES (UOC) GROUP 00 COVER AND HANDLE ASSEMBLY	(6) QTY
FIG 5					
1	XBHZZ	04901	796129	HANDLE GRIP.....	1
2	XBHZZ	04901	757518	FEET.....	4
3	XBHZZ	04901	600403	CASE.....	1
4	XBHZZ	04901	911028	SCREW.....	4
5	XBHZZ	04901	757510	BUMPER,PLASTIC.....	4
6	XBHZZ	04901	793250	SCREW.....	2
7	XBHZZ	04901	842112	WASHER.....	2
8	XBHZZ	04901	812240	HANDLE DETENT.....	2
9	XBHZZ	04901	812239	HUB DETENT.....	2
10	XBHZZ	04901	745278	NUT HEX.....	2
11	PAHZZ	96906	MS24629-23	SCREW,TAPPING,THREA.....	4
12	XBHZZ	04901	820119	SPRING.....	2
13	XBHZZ	04901	812241	COVER DETENT.....	2
14	XBHZZ	04901	796127	HANDLE.....	1

END OF FIGURE



* SEE FIG. 7 FOR PARTS.

EL9FK004

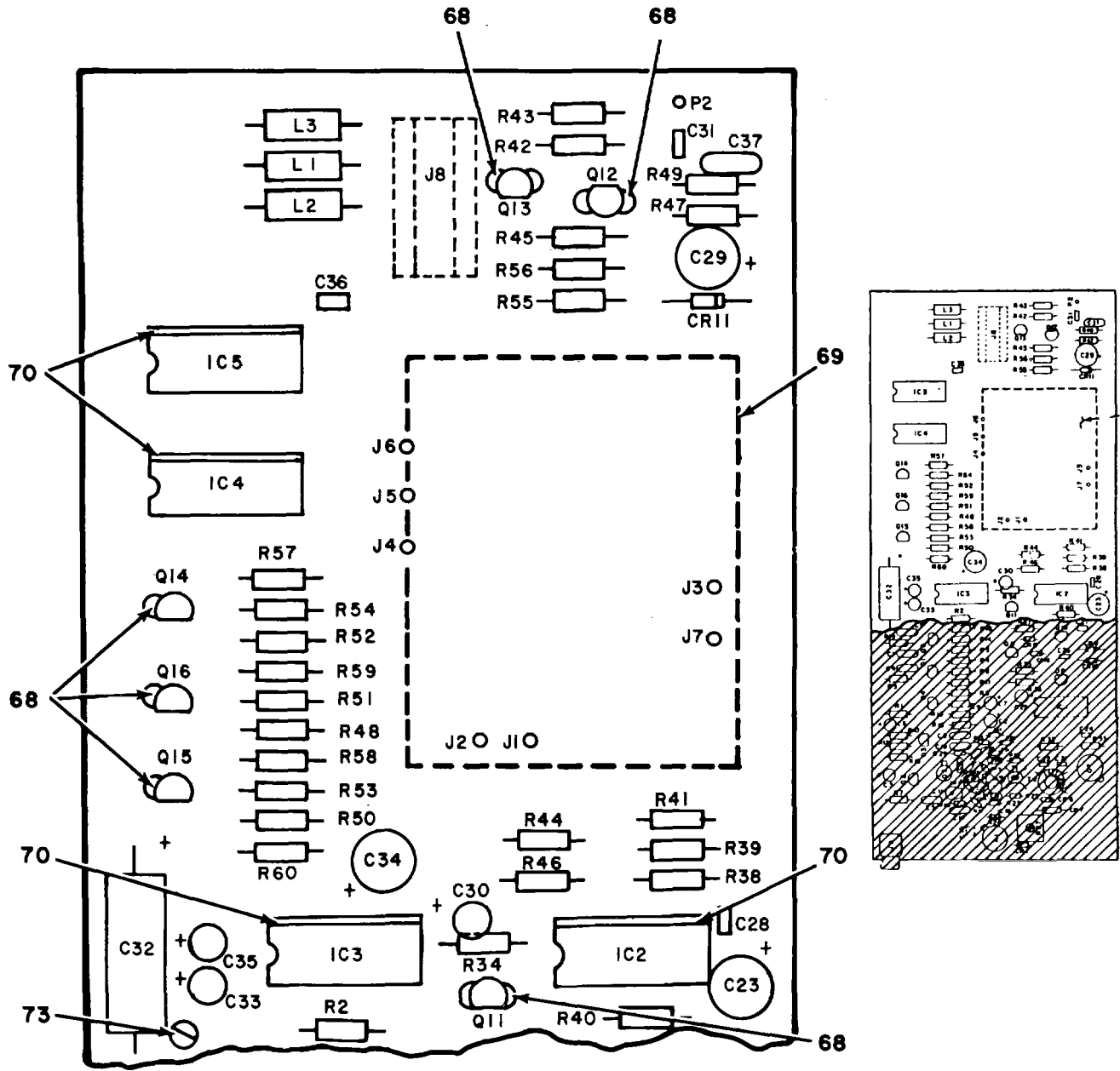
Figure 6. RF HOUSING ASSEMBLY.

SECTION II

TM11-6625-3059-24P

(1) ITEM NO	(2) SMR CODE	(3) FSCM	(4) PART NUMBER	(5) DESCRIPTION AND USABLE ON CODES (UOC) GROUP 00 RF HPUSING ASSEMBLY	(6) QTY
FIG 6					
1	PAHZZ	19505	17-02-19-000	CONNECTOR.....	1
2	XBHZZ	96906	MS35616-16	SCREW BH	4
3	XBHZZ	96906	MS35337-78	WASHER SPLIT	4
4	XBHZZ	96906	M535649-245	NUT,PLAIN,HEXAGON	4
5	XBHZZ	04901	742064	SPACER	4
6	XBHZZ	88044	AN505C4R6	SCREW FLAT HD	4
7	XBHZZ	04901	720801-1	SHIELD OSC	1
8	PAHHH	04901	082007-1	PRINTED CIRCUIT BOA.....	1
9	XBHZZ	04901	812232	RF HOUSING	1
10	XBHZZ	96906	MS35216-13	SCREW BH	5
11	XBHZZ	96906	M535333-57	WASHER INT TEETH	5
12	PAHZZ	04901	082008-1	PRINTED CIRCUIT BOA.....	1
13	PAHZZ	04901	571132	CABLE ASSEMBLY.....	1
14	PAHZZ	04901	082009-1	CIRCUIT CARD ASSEMB.....	1

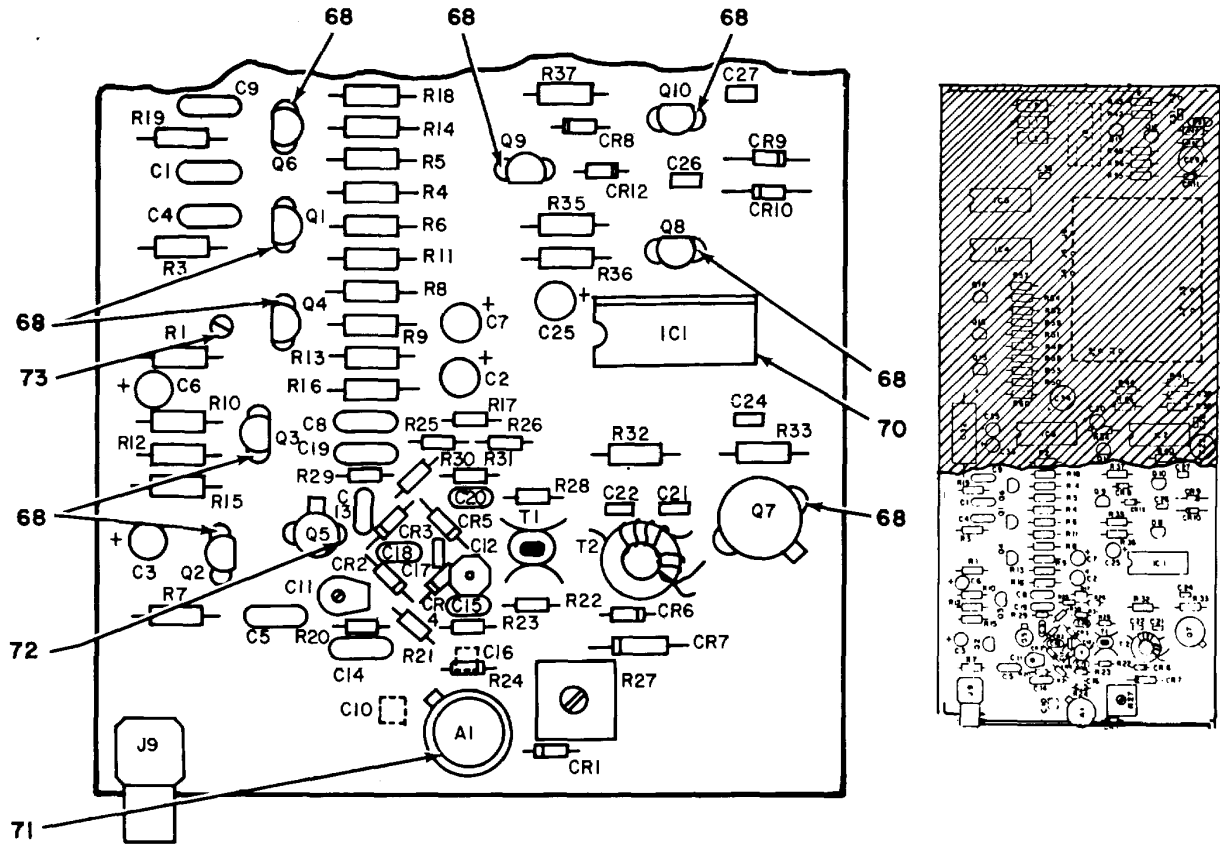
END OF FIGURE



NOTE: PREFIX ALL REFERENCE DESIGNATIONS WITH A3.

EL9FK009

Figure 7. CIRCUIT CARD ASSEMBLY, RF (A3), (SHEET 1 of 3)



NOTE: PREFIX ALL REFERENCE DESIGNATIONS WITH A3.

EL9FK021

Figure 7. CIRCUIT CARD ASSEMBLY, RF (A3). (SHEET 2 of 3)

LEGEND

REF. DES.	ITEM NO.	REF. DES.	ITEM NO.	REF. DES.	ITEM NO.	REF. DES.	ITEM NO.	REF. DES.	ITEM NO.	REF. DES.	ITEM NO.	REF. DES.	ITEM NO.
A1	1	C21	9	CR5	16	L1	26	R3	37	R24	50	R45	59
C1	2	C22	9	CR6	15	L2	26	R4	38	R25	51	R46	60
C2	3	C23	12	CR7	17	L3	26	R5	38	R26	51	R47	53
C3	3	C24	9	CR8	15	Q1	27	R6	39	R27	52	R48	56
C4	2	C25	3	CR9	18	Q2	28	R7	40	R28	48	R49	61
C5	2	C26	9	CR10	18	Q3	29	R8	41	R29	48	R50	56
C6	3	C27	9	CR11	18	Q4	27	R9	42	R30	48	R51	42
C7	3	C28	9	CR15	15	Q5	30	R10	42	R31	49	R52	56
C8	2	C29	13	IC1	19	Q6	27	R11	43	R32	53	R53	42
C9	2	C30	3	IC3	20	Q7	31	R12	39	R33	54	R54	42
C10	4	C31	9	IC4	20	Q8	32	R13	39	R34	55	R55	62
C11	5	C32	14	IC5	21	Q9	27	R14	42	R35	56	R56	62
C12	6	C33	3	IC6	22	Q10	32	R15	44	R36	57	R57	63
C13	7	C34	12	J1	23	Q11	27	R16	45	R37	56	R58	63
C14	2	C35	3	J2	23	Q12	33	R17	46	R38	41	R59	63
C15	8	C36	9	J3	23	Q13	34	R18	47	R39	41	R60	64
C16	4	C37	2	J4	23	Q14	35	R19	38	R40	58	R61	65
C17	9	CR1	15	J5	23	Q15	35	R20	48	R41	41	T1	66
C18	10	CR2	16	J6	23	Q16	35	R21	48	R42	43	T2	67
C19	2	CR3	16	J8	24	R1	36	R22	48	R43	56		
C20	11	CR4	16	J9	25	R2	36	R23	49	R44	49		

NOTE: PREFIX ALL REFERENCE DESIGNATIONS WITH A3.

EL9FK008

Figure 7. CIRCUIT CARD ASSEMBLY, RF (A3), (SHEET 3 of 3)

SECTION II

TM11-6625-3059-24P

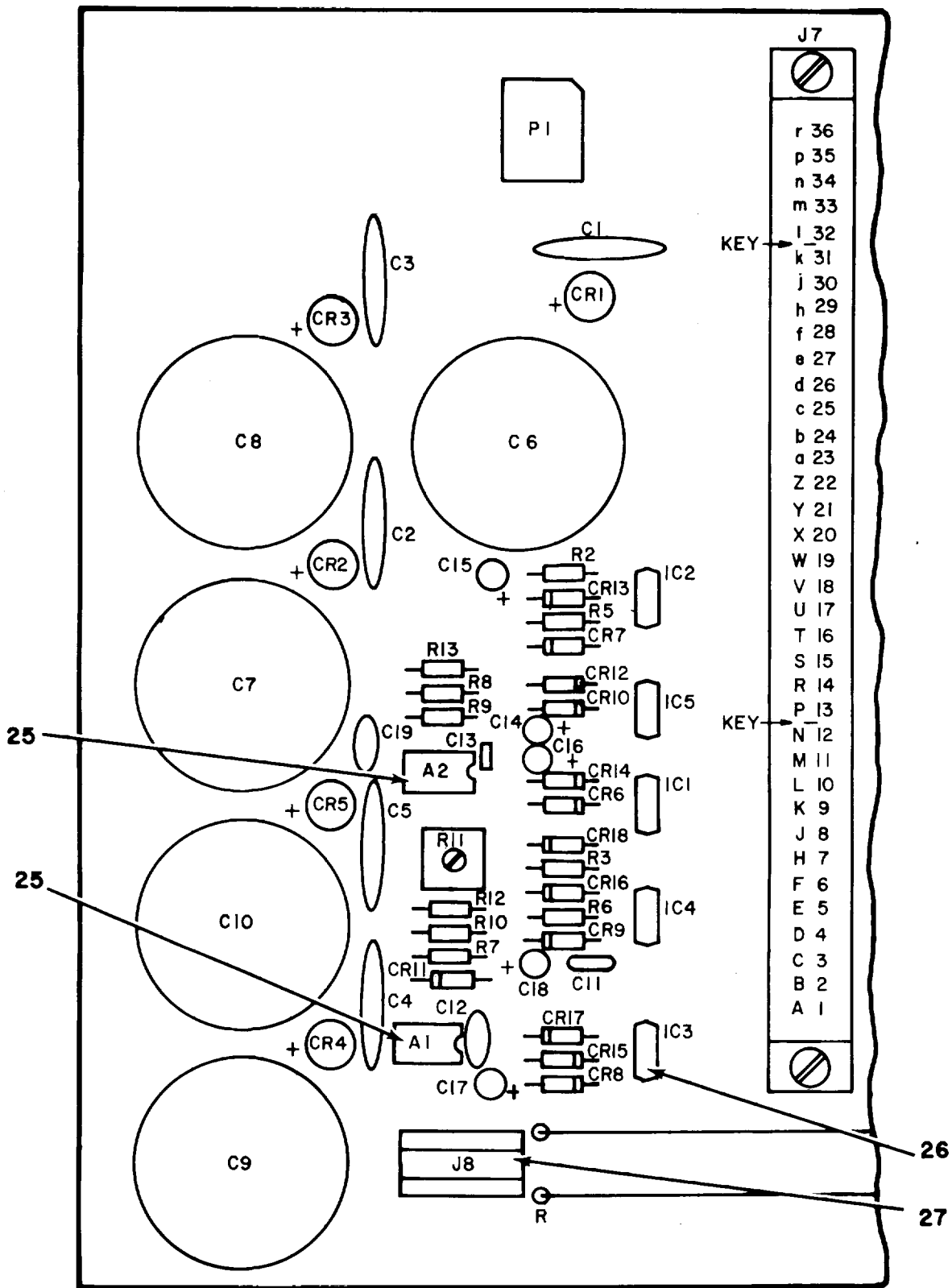
(1) ITEM NO	(2) SMR CODE	(3) FSCM	(4) PART NUMBER	(5) DESCRIPTION AND USABLE ON CODES (UOC) GROUP 01 CIRCUIT CARD ASSEMBLY RF (A3)	(6) QTY
FIG 7					
1	PGHZZ	24539	GP0463	MICROCIRCUIT,LINEAR	1
2	PAHZZ	10933	SR21SEI04NAA	CAPACITOR,FIXED,CER.....	8
3	PAHZZ	56289	96D106X9025KA1	CAPACITOR,FIXEDIELE.....	8
4	PAHZA	95275	VJ1210X103MF	CAPACITOR,FIXED,CER.....	2
5	PAHZZ	29454	9373	CAPACITOR,VARIABLE	1
6	PAHZZ	29454	7410-0	CAPACITOR,VARIABLE	1
7	PAHZZ	72136	DM5-EC-360J	CAPACITOR,FIXEDMIC.....	1
8	PAHZZ	72136	DMS-CC-080K	CAPACITOR,FIXED,MIC.....	1
9	PAHZZ	10933	SR20C103KAA	CAPACITOR,FIXED,CER.....	9
10	PAHZZ	72136	DM5SCCO30D03	CAPACITOR,FIXED,MIC.....	1
11	PAHZZ	72136	DM5-EC-120J	CAPACITOR,FIXED,MIC.....	1
12	PAHZZ	05397	T368C107KO10AS	CAPACITOR,FIXED,ELE.....	2
13	PAHZZ	56289	96D107X9020TE4	CAPACITOR,FIXED,ELE.....	1
14	PAHZZ	12594	470/6.3/8118	CAPACITOR ,FIXED,ELE.....	1
15	PAHZZ	28480	5082-2835	SEMICONDUCTOR DEVIC.....	4
16	PAHZZ	13499	353-3691-030	SEMICONDUCTOR DEVIC.....	4
17	PAHZZ	28480	5082-0180	SEMICONDUCTOR DEVIC.....	1
18	PAHZZ	81349	JANIN914	SEMICONDUCTOR DEVIC.....	3
19	PGHZZ	81349	M38510-07001BCB	MICROCIRCUIT,DIGITA	2
20	PGHZZ	02735	CD4011AE	MICROCIRCUIT,DIGITA	2
21	PGHZZ	81349	M38510/05101BC8	MICROCIRCUIT,DIGITA	1
22	PGHZZ	81349	M38510/061018EB	MICROCIRCUIT,DIGITA	1
23	PAHZZ	04901	479333	PIN SOCKET SPRING	7
24	PAHZZ	04901	473042	SOCKET,PLUG-IN ELEC.....	2
25	PAHZZ	04901	479366	CONNECTOR.....	1
26	PAHZZ	78429	4435-1K	COIL,ELECTRICAL	3
27	PAHZZ	04713	2N3904	TRANSISTOR.....	5
28	PAHZZ	04713	MPS3640	TRANSISTOR.....	1
29	PAHZZ	04713	2N3906	TRANSISTOR.....	1
30	PAHZZ	04713	2N4416	TRANSISTOR.....	1
31	PAHZZ	04713	2N3866	TRANSISTOR.....	1
32	PAHZZ	04713	MPS6507	TRANSISTOR.....	2
33	PAHZZ	80131	2N4403	TRANSISTOR.....	1
34	PAHZZ	80131	2N4401	TRANSISTOR.....	1
35	PAHZZ	03508	D39C2	TRANSISTOR.....	3
36	PAHZZ	81349	RCR20G131JS	RESISTOR,FIXED,COMP	2
37	PAHZZ	81349	RCR20G221JS	RESISTOR ,FIXED,COMP	1
38	PAHZZ	81349	RCR20G102JS	RESISTOR,FIXED,COMP	3
39	PAHZZ	81349	RCR200G752JS	RESISTOR,FIXED,COMP	3
40	PAHZZ	81349	RCR200G391JS	RESISTOR,FIXED,COMP	1
41	PAHZZ	81349	RCR200GS11JS	RESISTOR,FIXED,COMP	2
42	PAHZZ	81349	RCR20G470JS	RESISTOR,FIXED,COMP	6
43	PAHZZ	81349	RCR20G392JS	RESISTOR,FIXED,COMP	2
44	PAHZZ	81349	RCR20G82IJS	RESISTOR,FIXED,COMP	1
45	PAHZZ	81349	RCR20G272JS	RESISTOR,FIXED,COMP	1
46	PAHZZ	81349	RCR0SG510JS	RESISTOR,FIXED,COMP	1

SECTION II

TM11-6625-3059-24P

(1) ITEM NO	(2) SMR CODE	(3) FSCM	(4) PART NUMBER	(5) DESCRIPTION AND USABLE ON CODES (UOC)	(6) QTY
47	PAHZZ	81349	RCR20G202JS	RESISTOR, FIXED, COMP	1
48	PAHZZ	81349	RCR0SG470JS	RESISTOR, FKXED, COMP	6
49	PAHZZ	81349	RCR05G103JS	RESISTOR VFIXED, COMP	3
50	PAHZZ	81349	RCR0SG513JS	RESISTOR, FIXED, COMP	1
51	PAHZZ	81349	RCR0SG101JS	RESISTOR, FIXED, COMP	2
52	PAHZZ	73138	72PR100K	RESISTOR, VARIABLE, N	1
53	PAHZZ	81349	RCR20G471JS	RESISTOR, FIXED, COMP	2
54	PAHZZ	81349	RCR20G101S	RESISTOR, FIXED, COMP	1
55	PAHZZ	81349	RCR20G330JS	RESISTOR, FIXED, COMP	1
56	PAHZZ	81349	RCR20G103JS	RESISTOR, FTXED, COMP	6
57	PAHZZ	81349	RCR20G561JS	RESISTORA, FXED, COMP	1
58	PAHZZ	81349	RCR20G201JS	RESISTOR, FIXED, COMP	1
59	PAHZZ	81349	RNCSSK2430FS	RESISTOR, FIXED, FILM	1
60	PAHZZ	81349	RCR20G331JS	RESISTOR, FIXED, COMP	1
61	PAHZZ	81349	RCR20G560JS	RESISTOR, FIXED, COMP	1
62	PAHZZ	81349	RN55D1002F	RESISTOR, FIXED, FILM	2
63	PAHZZ	81349	RCR20G104JS	RESISTOR 1FIXEDOCOMP	3
64	PAHZZ	81349	RCR20G680JS	RESISTOR, FIXEDOCOMP	1
65	PAHZZ	04901	345024	RESISTOR, NETWORK	1
66	PAHZZ	04901	410080	TRANSFORMER BAL	1
67	PAHZZ	04901	410081	TRANSFORMER, PULSE	1
68	PAHZZ	04901	473046	SOCKET, PLUG-IN ELEC	15
69	XBHZZ	04901	730686	SHIELD OSC	1
70	PAHZZ	04901	473019	SOCKET, PLUG-IN ELEC	4
71	PAHZZ	04901	TO-5	PAD INSULATION	1
72	PAHZZ	04901	473051	SOCKET, PLUG-IN ELEC	1
73	XBHZZ	04901	793193	SCREW	2

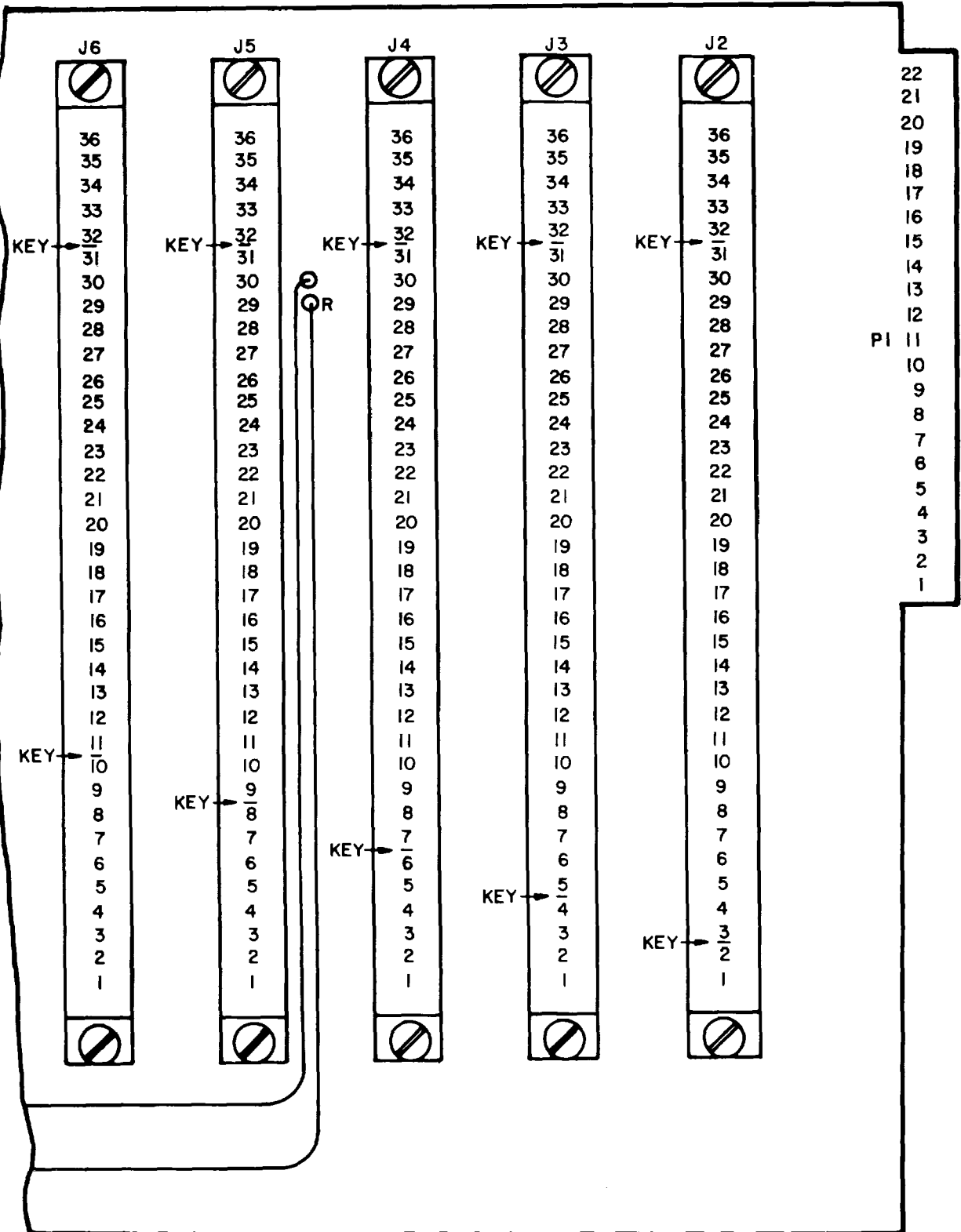
END OF FIGURE



NOTE: PREFIX ALL REFERENCE DESIGNATIONS WITH A6.

EL9FK011

Figure 8. CIRCUIT CARD ASSEMBLY, MASTER (A6), (SHEET 1 of 4)



NOTE: PREFIX ALL REFERENCE DESIGNATIONS WITH A6.

EL9FK022

Figure 8. CIRCUIT CARD ASSEMBLY, MASTER (A6), (SHEET 2 of 4)

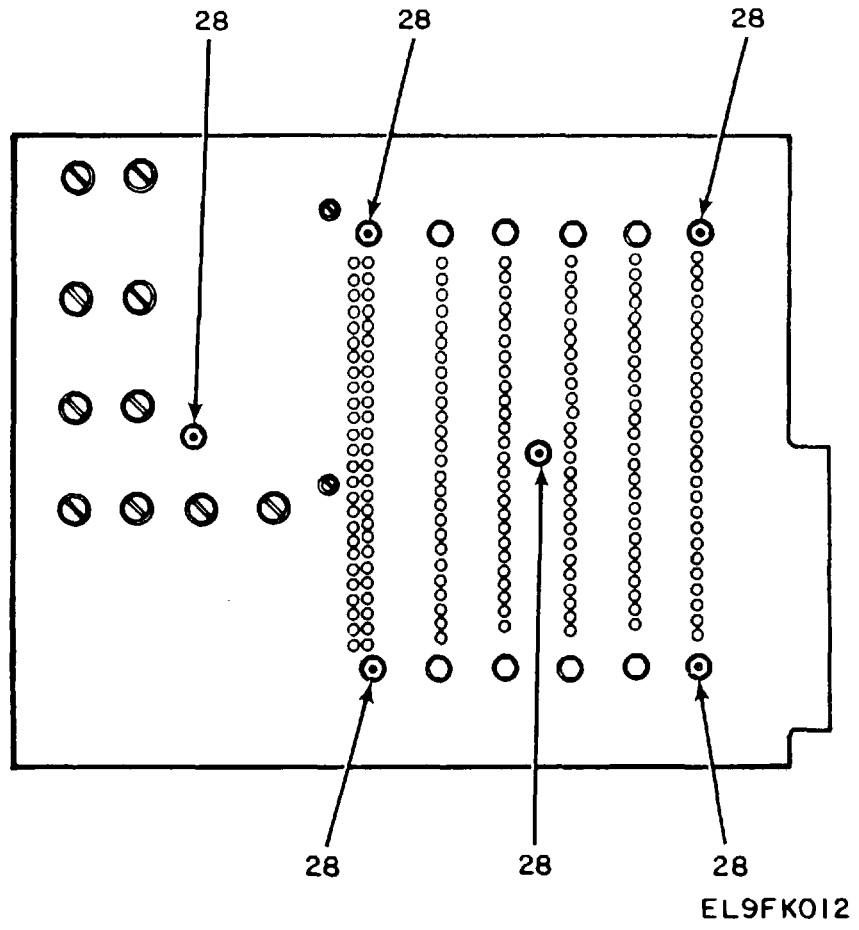


Figure 8. CIRCUIT CARD ASSEMBLY, MASTER (A6), (SHEET 3 of 4)

LEGEND

REF. DES.	ITEM NO.	REF. DES.	ITEM NO.	REF. DES.	ITEM NO.	REF. DES.	ITEM NO.	REF. DES.	ITEM NO.	REF. DES.	ITEM NO.
A1	1	C10	4	CR2	10	CR13	11	J2	16	R8	21
A2	1	C11	5	CR3	10	CR14	11	J3	16	R9	22
C1	2	C12	6	CR4	10	CR15	11	J4	16	R10	18
C2	2	C13	7	CR5	10	CR16	11	J5	16	R11	23
C3	2	C14	8	CR6	11	CR17	13	J6	16	R12	24
C4	2	C15	8	CR7	11	CR18	13	J7	17	R13	21
C5	2	C16	8	CR8	11	IC1	14	R2	18		
C6	3	C17	8	CR9	11	IC2	15	R3	19		
C7	3	C18	8	CR10	11	IC3	14	R5	20		
C8	4	C19	9	CR11	12	IC4	15	R6	19		
C9	4	CR1	10	CR12	11	IC5	14	R7	18		

NOTE: PREFIX ALL REFERENCE DESIGNATIONS WITH A6. EL9FK010

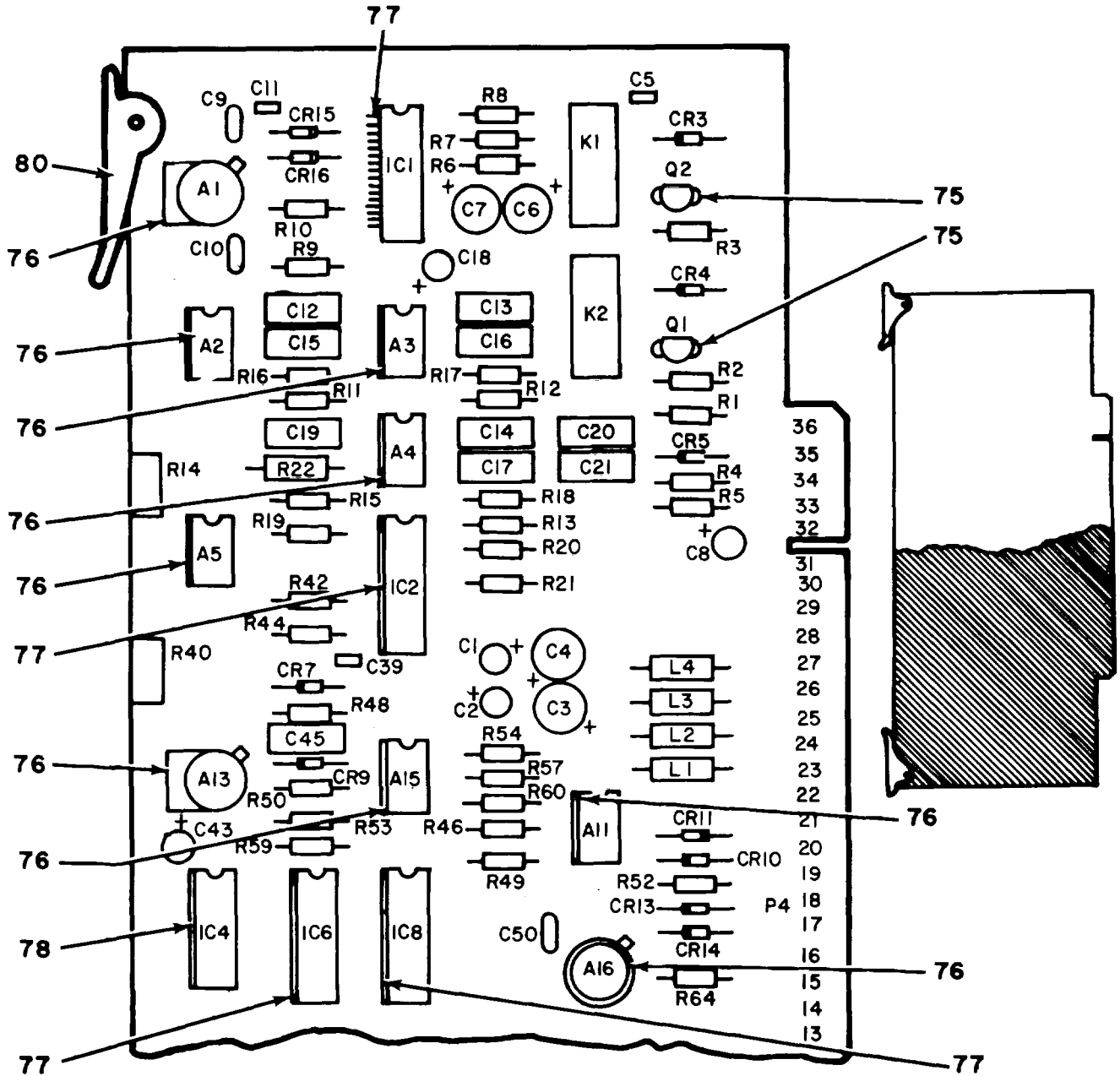
Figure 8. CIRCUIT CARD ASSEMBLY, MASTER (A6), (SHEET 4 of 4)

SECTION II

TM11-6625-3059-24P

(1) ITEM NO	(2) SMR CODE	(3) FSCM	(4) PART NUMBER	(5) DESCRIPTION AND USABLE ON CODES (UOC) GROUP 02 CIRCUIT CARD ASSEMBLY MASTER (A6)	(6) QTY
FIG 8					
1	PGHZZ	81349	M38510/10103BPC	MICROCIRCUIT,LINEAR	2
2	PAHZZ	91418	RMC-SM	CAPACITOR,FIXED,CER	5
3	PAHZZ	90201	CGS552U015881	CAPACITOR,FIXED,ELE	2
4	PAHZZ	90201	CGS222UO20BB1	CAPACITOR,FIXED,ELE	3
5	PAHZZ	10933	SR215E104MAA	CAPACITOR,FIXED,CER	1
6	PAHZZ	60705	561CCOGBA102AG33	CAPACITOR,FIXED,CER	1
7	PAHZZ	10933	SRS51C102KAA	CAPACITOR,FXD,CER	1
8	PAHZZ	56289	196D106X9025KA1	CAPACITOR,FIXED,EL	5
9	PAHZZ	56289	C067B251E331K	CAPACITOR,FIXED,CER	1
10	PAHZZ	15052	VE-18	RECTIFIER BRIDGE	5
11	PAHZZ	81349	JANIN3611	SEMICONDUCTOR DEVIC	10
12	PAHZZ	04713	SZ12170	SEMICONDUCTOR DEVIC	1
13	PAHZZ	81349	JANIN4467	SEMICONDUCTOR DEVIC	2
14	PAHZZ	07263	UA78MGU1C	MICROCIRCUIT,LINEAR	3
15	PAHZZ	07263	UA79MGU1C	MICROCIRCUIT ,LINEAR	2
16	PAHZZ	02660	143-036-07	CONNECTOR ,RECEPT	5
17	PAHZZ	02660	225-23621-110	CONNECTOR,RECEPTACL	1
18	PAHZZ	81349	RN55D1101F	RESISTOR ,FIXED,FILM	3
19	PAHZZ	81349	RCR20G473JS	RESISTOR,FIXED,COMP	2
20	PAHZZ	81349	RNC55K1371FS	RESISTOR,FIXED,FILM	1
21	PAHZZ	81349	RNC55K9091FS	RESISTOR,FIXED,FILM	2
22	PAHZZ	81349	RNC55K4991FS	RESISTOR,FIXED,FILM	1
23	PAHZZ	73138	72PR200	RESISTOR,VARIABLE,N	1
24	PAHZZ	81349	RNC55K7500FS	RESISTOR,FIXED,FILM	1
25	PAHZZ	04901	473041	SOCKET,PLUG-IN ELEC	2
26	XBHZZ	04901	720809	INSULATOR	5
27	PAHZZ	04901	473042	SOCKET,PLUG-IN ELEC	1
28	PAHZZ	04901	745195	NUT,PLAIN,HEXAGON	6

END OF FIGURE



NOTE: PREFIX ALL REFERENCE DESIGNATIONS WITH A9.

EL9FK014

Figure 9. CIRCUIT CARD ASSEMBLY, AUDIO (A9), (SHEET 1 of 3)

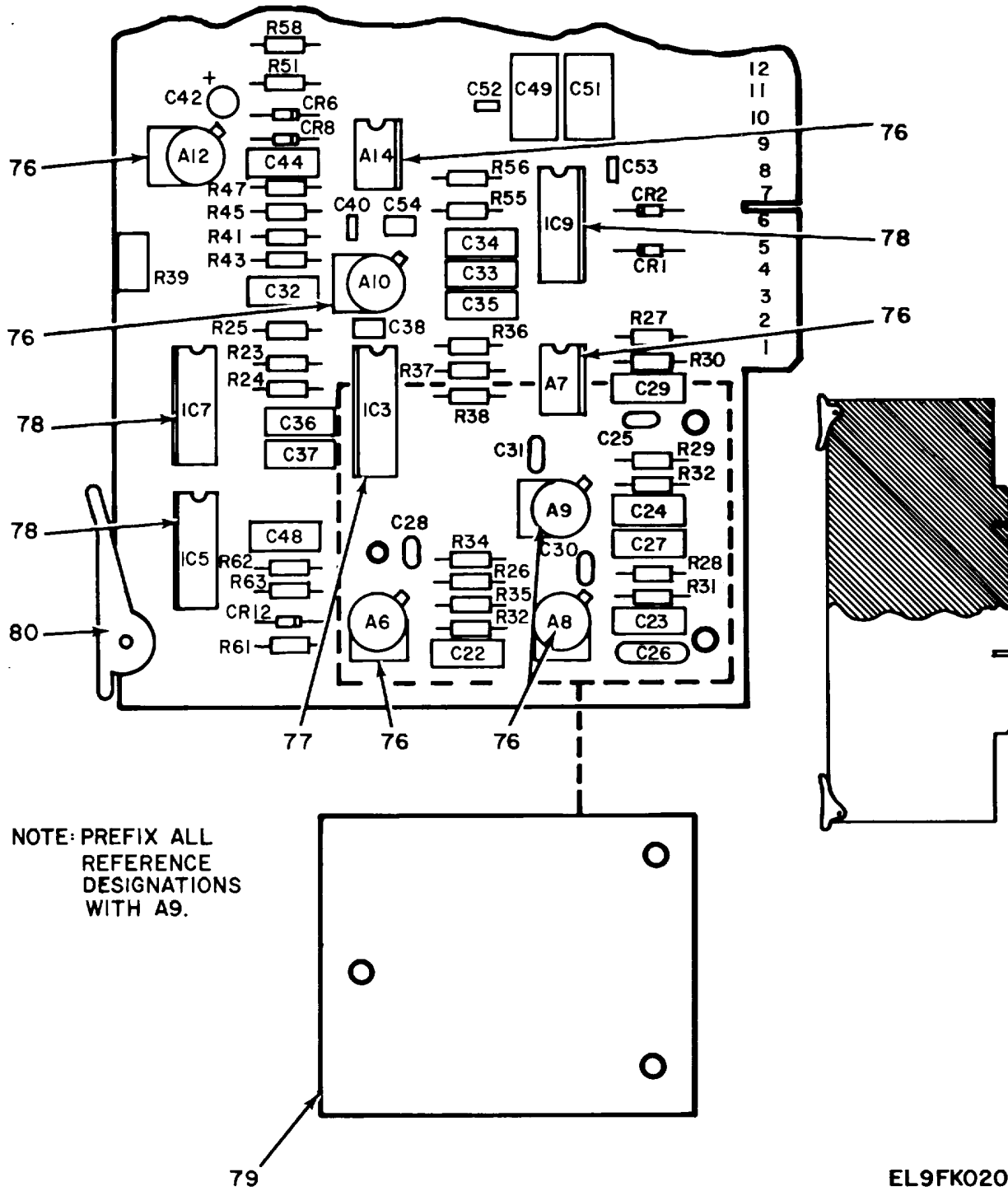


Figure 9. CIRCUIT CARD ASSEMBLY, AUDIO (A9), (SHEET 2 of 3)

EL9FK020

LEGEND

REF. DES.	ITEM NO.	REF. DES.	ITEM NO.	REF. DES.	ITEM NO.	REF. DES.	ITEM NO.	REF. DES.	ITEM NO.	REF. DES.	ITEM NO.	REF. DES.	ITEM NO.	REF. DES.	ITEM NO.
A1	1	C6	8	C27	14	C51	20	IC2	23	R6	35	R27	45	R48	66
A2	2	C7	8	C28	17	C52	9	IC3	23	R7	36	R28	53	R49	67
A3	2	C8	7	C29	18	C53	9	IC4	24	R8	37	R29	54	R50	68
A4	2	C9	10	C30	17	C54	19	IC5	25	R9	38	R30	52	R51	68
A5	2	C10	10	C31	17	CR1	21	IC6	26	R10	39	R31	55	R52	69
A6	1	C11	9	C32	11	CR2	21	IC7	27	R11	40	R32	56	R53	70
A7	2	C12	11	C33	18	CR3	21	IC8	28	R12	40	R33	57	R54	70
A8	1	C13	12	C34	18	CR4	21	IC9	29	R13	41	R34	58	R55	70
A9	1	C14	12	C35	12	CR5	22	K1	30	R14	42	R35	59	R56	71
A10	3	C15	11	C36	12	CR6	21	K2	30	R15	43	R36	60	R57	71
A11	4	C16	12	C37	12	CR7	21	L1	31	R16	44	R37	41	R58	58
A12	5	C17	12	C38	19	CR8	22	L2	31	R17	44	R38	61	R59	58
A13	5	C18	7	C39	9	CR9	22	L3	31	R18	45	R39	62	R60	72
A14	6	C19	12	C40	9	CR10	21	L4	31	R19	46	R40	62	R61	70
A15	6	C20	12	C42	7	CR11	21	Q1	32	R20	47	R41	63	R62	73
A16	1	C21	13	C43	7	CR12	21	Q2	32	R21	48	R42	63	R63	74
C1	7	C22	12	C44	11	CR13	21	R1	33	R22	49	R43	64	R64	38
C2	7	C23	14	C45	11	CR14	21	R2	33	R23	50	R44	65		
C3	8	C24	12	C48	11	CR15	21	R3	33	R24	51	R45	65		
C4	8	C25	15	C49	20	CR16	21	R4	34	R25	51	R46	38		
C5	9	C26	16	C50	17	IC1	23	R5	34	R26	52	R47	66		

NOTE: PREFIX ALL REFERENCE DESIGNATIONS WITH A9.

EL9FK013

Figure 9. CIRCUIT CARD ASSEMBLY, AUDIO (A9), (SHEET 3 of 3)

SECTION II

TM11-6625-3059-24P

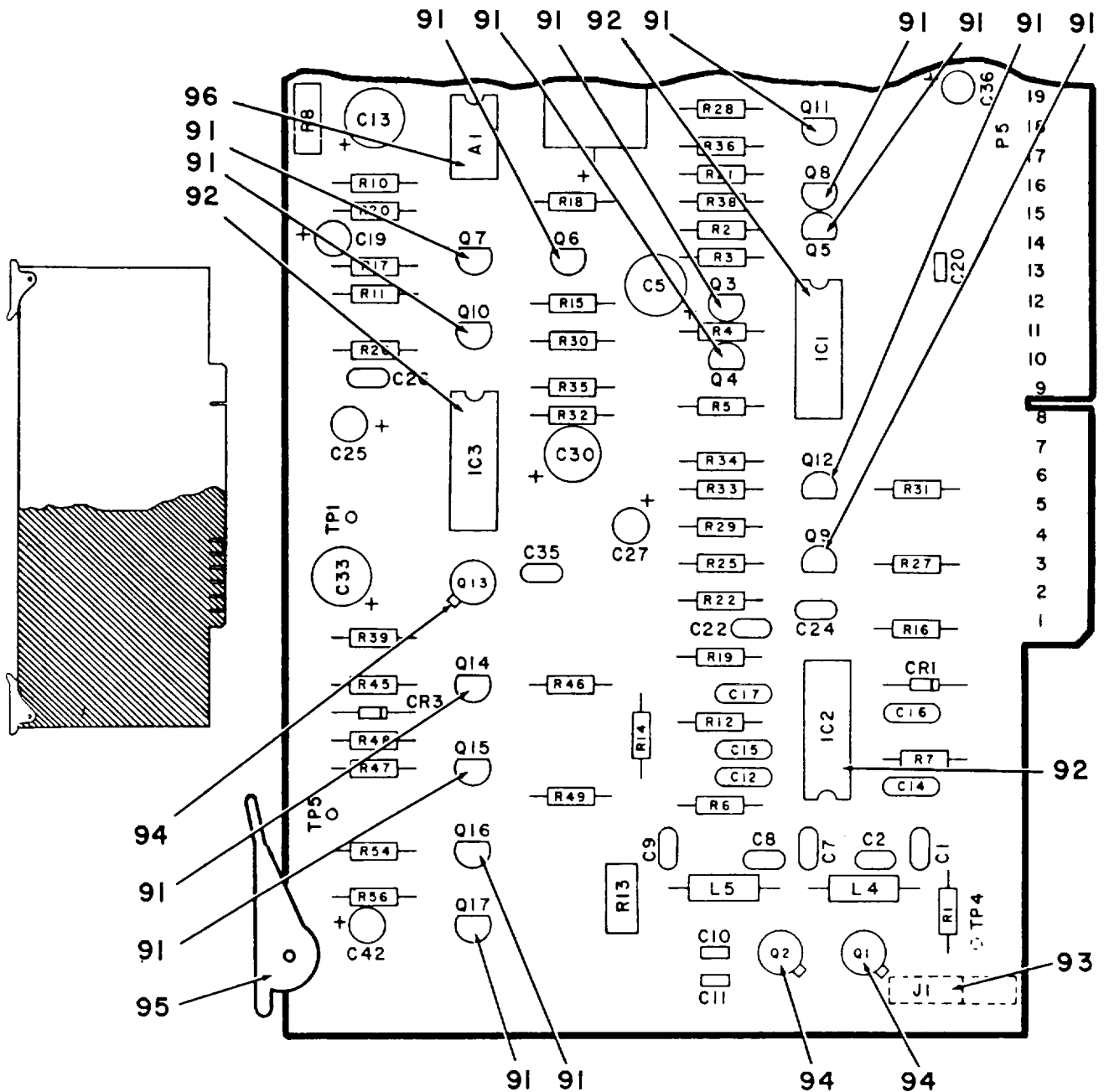
(1) ITEM NO	(2) SMR CODE	(3) FSCM	(4) PART NUMBER	(5) DESCRIPTION AND USABLE ON CODES (UOC) GROUP 03 CIRCUIT CARD ASSEMBLY AUDIO (A9)	(6) QTY
FIG 9					
1	PGHZZ	02735	A3130S	MICROCIRCUIT,LINEAR	5
2	PGHZZ	27014	LM310N	MICROCIRCUIT,LINEAR	5
3	PAHZZ	06665	OP-16GJ	AMPLIFIER.....	1
4	PAHZZ	18324	NE5534AN	MICROCIRCUIT,LINEAR	1
5	PAHZZ	02735	CA3080AS	MICROCIRCUIT,LINEAR	2
6	PAHZZ	01295	LF356P	AMPLIFIER.....	2
7	PAHZZ	56289	196D106X9025KAI	CAPACITOR,FIXED,ELE	6
8	PAHZZ	05397	T368CL07KO10AS	CAPACITOR,FIXED,ELE	4
9	PAHZZ	10933	SR201C103KAA	CAPACITOR,FIXED,CER	6
10	PAHZZ	81349	CMR03C100DOCR	CAPACITOR,FIXED,MIC	2
11	PAHZZ	27735	MPC-53-1-50-2	CAPACITOR,FIXED,MET	6
12	PAHZZ	27735	MPC-53-01-50-2	CAPACITOR,FIXED,MET	11
13	PAHZZ	27735	MPC-53-047-50-2	CAPACITOR,FIXED,MET	1
14	PAHZZ	27735	MPC-53-002-50-2	CAPACITOR,FIXED,MET	2
15	PAHZZ	72136	DMS-FY-241F	CAPACITOR,FIXED,M	1
16	PAHZZ	72136	DM15-E471	CAPACITOR,FIXED,MIC	1
17	PAHZZ	81349	CMR03E470GOCR	CAPACITOR,FIXED,MIC	4
18	PAHZZ	27735	MPC-53-001-50-2	CAPACITOR,FIXED,MET	3
19	PAHZZ	10933	SR215E104MAA	CAPACITOR,FIXED,CER	2
20	PAHZZ	14752	652A-1-A-105K	CAPACITOR,FIXED,MET	2
21	PAHZZ	04713	MPS-A12	TRANSISTOR	2
22	PAHZZ	07263	FDH300	SEMICONDUCTOR DEVIC	3
23	PGHZZ	02735	CD40518D/3	MICROCIRCUIT,DIGITA	1
24	PGHZZ	81349	M38510/058028CB	MICROCIRCUIT,DIGITA	1
25	PGHZZ	02735	CD4011AE	MICROCIRCUIT,DIGITA	1
26	PAHZZ	53110	698-3-RIOK-3	RESISTOR,NETWORK.....	1
27	PGHZZ	81349	M38510/05101BCB	MICROCIRCUIT,DIGITA	1
28	PAHZZ	14933	7901501EB	MICROCIRCUIT,DIGITA	1
29	PGHZZ	81349	M38510/17101BCB	MICROCIRCUIT,DIGITA	1
30	PAHZZ	14752	RA3038-1051	RELAY.....	2
31	PAHZZ	78429	4435-1K	COIL,ELECTRICAL	4
32	PAHZZ	81349	JANIN914	SEMICONDUCTOR DEVIC	13
33	PAHZZ	81349	RCR20G104JS	RESISTOR,FIXED,COMP	3
34	PAHZZ	81349	RCR20G513JS	RESISTOR,FIXED,COMP	2
35	PAHZZ	03888	PME-55-T2	RESISTOR,FXD,FILM.....	1
36	PAHZZ	03888	PME-55-T2	RESISTOR,FXD,FILM.....	1
37	PAHZZ	03888	PME-55-T2	RESISTOR,FXD,FILM.....	1
38	PAHZZ	81349	RNC55KIOOIFS	RESISTOR,FIXED,FILM	3
39	PAHZZ	81349	RNC55K909IFS	RESISTOR,FIXED,FILM	1
40	PAHZZ	81349	RNC55KI053FS	RESISTOR,FIXED,FILM	2
41	PAHIZ	81349	RNC55KIO52FS	RESISTOR,FIXED,FILM	2
42	PAHZZ	73138	72XWR100	RESISTOR,VARIABLE,N	1
43	PAHZZ	81349	RNCSS5K21OFS	RESISTOR,FIXED,FILM	1
44	PAHZZ	81349	RNC55K2672FS	RESISTOR,FIXED,FILM	2
45	PAHZZ	81349	RNC55K2671FS	RESISTOR,FIXED,FILM	3
46	PAHZZ	81349	RNCS5K6191PS	RESISTOR,FIXED,FILM	1

SECTION II

TM11-6625-3059-24P

(1) ITEM NO	(2) SMR CODE	(3) FSCM	(4) PART NUMBER	(5) DESCRIPTION AND USABLE ON CODES (UOC)	(6) QTY
47	PAHZZ	81349	RNC55K5902FS	RESISTOR, FIXED, FILM.....	1
48	PAHZZ	81349	RNC55K1131FS	RESISTOR, FIXED, FILM.....	1
49	PAHZZ	81349	RNC55K5363FS	RESISTOR, FIXED, FILM.....	1
50	PAHZZ	81349	RNC55K4991FS	RESISTOR, FIXED, FILM.....	1
51	PAHZZ	81349	RNC55K7501FS	RESISTOR, FIXED, FILM.....	2
52	PAHZZ	81349	RNC55K2433FS	RESISTOR FIXED FILM.....	1
53	PAHZZ	81349	RNC55K1332FS	RESISTOR, FIXED, FILM.....	1
54	PAHZZ	81349	RNC55K1912FS	RESISTOR, FIXED, FILM.....	1
55	PAHZZ	81349	RNC55K8871FS	RESISTOR, FIXED, FILM.....	1
56	PAHZZ	81349	RNC55K7321FS	RESISTOR, FIXED, FILM.....	1
57	PAHZZ	81349	RNC55K5621FS	RESISTOR, FIXED, FILM.....	1
58	PAHZZ	81349	RCR20G103JS	RESISTOR, FIXED, COMP.....	3
59	PAHZZ	81349	RNC55K3921FS	RESISTOR, FIXED, FILM.....	1
60	PAHZZ	81349	RNC55K1271FS	RESISTOR, FIXED, FILM.....	1
61	PAHZZ	81349	RNC55K5361FS	RESISTOR, FIXED, FILM.....	1
62	PAHZZ	73138	72XWR100K	RESISTOR, VARIABLE, N.....	2
63	PAHZZ	81349	RNCSSK3012FS	RESISTOR, FIXED, FILM.....	2
64	PAHZZ	81349	RCR20G825JS	RESISTOR, FIXED, COMP.....	1
65	PAHZZ	81349	RNC55K2000FS	RESISTOR, FIXED, FILM.....	2
66	PAHZZ	81349	RCR20G203JS	RESISTOR, FIXED, COMP.....	2
67	PAHZZ	81349	RNC55K1821FS	RESISTOR, FIXED, FILM.....	1
68	PAHZZ	81349	RCR200G102JS	RESISTOR, FIXED, COMP.....	2
69	PAHZZ	81349	RN55D6040F	RESISTOR, FIXED, FILM.....	1
70	PAHZZ	81349	RCR20G223JS	RESISTOR, FIXED, COMP.....	4
71	PAHZZ	81349	RCR20G101JS	RESISTOR, FIXED, COMP.....	2
72	PAHZZ	81349	RCR20G512JS	RESISTOR, FIXED, COMP.....	1
73	PAHZZ	81349	RCR200G05JS	RESISTOR, FIXED, COMP.....	1
74	PAHZZ	81349	RCR20C222JS	RESISTOR, FIXED, COMP.....	1
75	PAHZZ	04901	473046	SOCKET, PLUG-IN ELEC.....	2
76	PAHZZ	04901	473041	SOCKET, PLUG-IN ELEC.....	16
77	PAHZZ	04901	473042	SOCKET, PLUG-IN ELEC.....	5
78	PAHZZ	04901	473019	SOCKET, PLUG-IN ELEC.....	4
79	XBHZZ	04901	720848	SHIELD, PLATE.....	1
80	PAHZZ	04901	483207	EXTRACTOR, ELECTRICAL.....	2

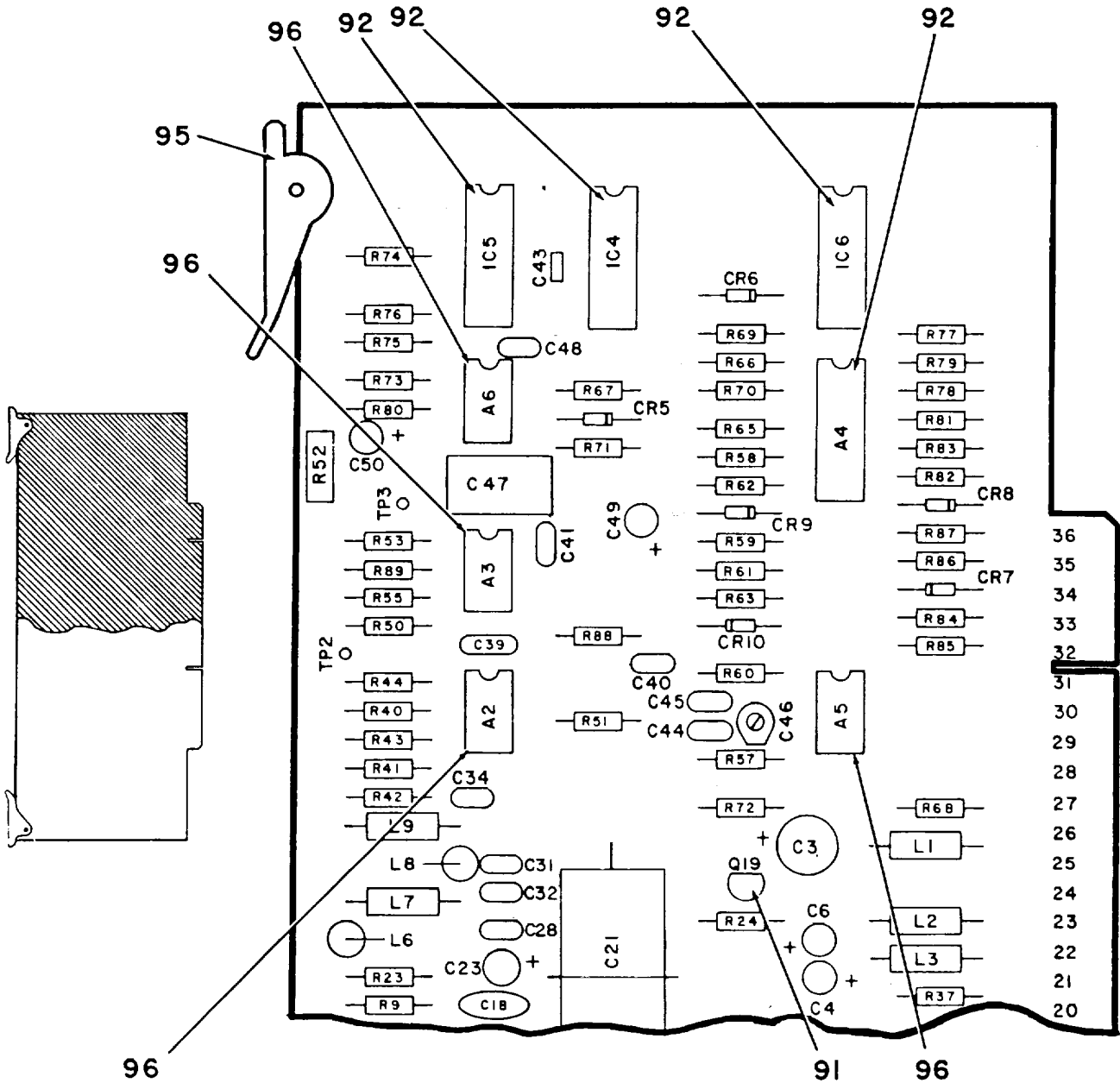
END OF FIGURE



NOTE: PREFIX ALL REFERENCE DESIGNATIONS WITH A10.

EL9FK016

Figure 10. CIRCUIT CARD ASSEMBLY, FM (A10), (SHEET 1 of 3).



NOTE: PREFIX ALL REFERENCE DESIGNATIONS WITH A10.

EL9FK019

Figure 10. CIRCUIT CARD ASSEMBLY, FM (A10), (SHEET 2 of 3).

LEGEND

REF. DES.	ITEM NO.	REF. DES.	ITEM NO.	REF. DES.	ITEM NO.	REF. DES.	ITEM NO.	REF. DES.	ITEM NO.	REF. DES.	ITEM NO.	REF. DES.	ITEM NO.	REF. DES.	ITEM NO.	REF. DES.	ITEM NO.
A1	1	C16	13	C40	23	IC3	32	Q9	41	R12	55	R33	68	R54	44	R76	46
A2	2	C17	13	C41	18	IC4	30	Q10	41	R13	56	R34	61	R55	46	R77	79
A3	1	C18	15	C42	8	IC5	33	Q11	41	R14	57	R35	69	R56	44	R78	79
A4	3	C19	8	C43	12	IC6	34	Q12	41	R15	58	R36	63	R57	46	R79	89
A5	4	C20	11	C44	24	L1	35	Q13	40	R16	59	R37	62	R58	79	R80	77
A6	1	C21	16	C45	25	L2	35	Q14	42	R17	60	R38	70	R59	79	R81	84
C1	5	C22	17	C46	26	L3	35	Q15	42	R18	62	R39	71	R60	46	R82	79
C2	6	C23	8	C47	27	L4	36	Q16	41	R19	61	R40	72	R61	80	R83	90
C3	7	C24	18	C48	18	L5	37	Q17	42	R20	62	R41	46	R62	80	R84	70
C4	8	C25	19	C49	8	L6	38	Q19	43	R21	63	R42	64	R63	81	R85	79
C5	7	C26	20	C50	28	L7	39	R1	44	R22	61	R43	73	R65	82	R86	79
C6	8	C27	8	CR1	29	L8	38	R2	45	R23	64	R44	74	R66	83	R87	88
C7	9	C28	20	CR3	29	L9	39	R3	46	R24	65	R45	48	R67	84	R88	45
C8	6	C30	7	CR5	29	Q1	40	R4	47	R25	61	R46	75	R68	82	R89	86
C9	10	C31	20	CR6	29	Q2	40	R5	48	R26	66	R47	48	R69	79		
C10	11	C32	21	CR7	29	Q3	41	R6	49	R27	49	R48	76	R70	79		
C11	12	C33	14	CR8	29	Q4	42	R7	50	R28	49	R49	76	R71	85		
C12	13	C34	20	CR9	29	Q5	42	R8	51	R29	67	R50	77	R72	82		
C13	14	C35	22	CR10	29	Q6	41	R9	52	R30	62	R51	46	R73	86		
C14	13	C36	19	IC1	30	Q7	41	R10	53	R31	49	R52	56	R74	87		
C15	13	C39	13	IC2	31	Q8	42	R11	54	R32	54	R53	78	R75	88		

NOTE: PREFIX ALL REFERENCE DESIGNATIONS WITH A10

EL9FK015

Figure 10. CIRCUIT CARD ASSEMBLY, FM (A10), (SHEET 3 of 3).

SECTION II

TM11-6625-3059-24P

(1) ITEM NO	(2) SMR CODE	(3) FSCM	(4) PART NUMBER	(5) DESCRIPTION AND USABLE ON CODES (UOC) GROUP 04 CIRCUIT CARD ASSEMBLY FM (A10)	(6) QTY
FIG 10					
1	PGHZZ	81349	M38510/101038PC	MICROCIRCUIT,LINEAR	3
2	PAHZZ	18324	NE5534AN	MICROCIRCUIT,LINEAR	1
3	PGHZZ	81349	M3851011201BCB	MICROCIRCUITLINEAR	1
4	PGHZZ	27014	LM318N	MICROCIRCUIT,LINEAR	1
5	PAHZZ	72136	DM5-FY-251J	CAPACITOR,FIXEDMIC	1
6	PAHZZ	72136	DMS-CC-080K	CAPACITOR,FIXED,MIC	2
7	PAHZZ	05397	T368CT07KO10AS	CAPACITOR,FIXED,ELE	3
8	PAHZZ	56289	196D106X9025KA1	CAPACITOR,FIXED,ELE	7
9	PAHZZ	72136	DM5-FC-910J	CAPACITOR,FIXED,M	1
10	PAHZZ	81349	CMRO3E200DOCR	CAPACITOR,FIXED,MIC	1
11	PAHZZ	10933	SR201C103KAA	CAPACITOR,FIXED,CER	2
12	PAHZZ	10933	SR1S1C1O2KAA	CAPACITOR,FXD,CER	2
13	PAHZZ	10933	SR215E1O4MAA	CAPACITOR,FIXED,CER	6
14	PAHZZ	56289	196D476X9020LA3	CAPACITOR,FIXED,ELE	2
15	PAHZZ	60705	561CCOGBA102AG33	CAPACITOR,FIXED,CER	1
16	PAHZZ	73445	ET102X016A02	CAPACITOR,FIXED,ELE	1
17	PAHZZ	72136	DM5-CC-220J	CAPACITOR,FXD,MICA	1
18	PAHZZ	81349	CMRO3E470GOGR	CAPACITOR ,FIXED,MIC,	3
19	PAHZZ	56289	196DI05X9035HAI	CAPACITOR ,FIXED,ELE	2
20	PAHZZ	72136	DM5-FY-221J	CAPACITOR,FXD,MICA	4
21	PAHZZ	72136	DMS-FY-241J	CAPACITOR,FIXED,MIC	1
22	PAHZZ	72136	DMS-FA-20LJ	CAPACITOR,FIXED,MIC	1
23	PAHZZ	14655	CDSFC101G03	CAPACITOR,FIXED,MIC	1
24	PAHZZ	72136	DMS-FY-251F	CAPACITOR,FIXED,MIC	1
25	PAHZZ	72136	DM5-EC-390J	CAPACITOR ,FIXEDIMIC	1
26	PAHZZ	29454	9372	CAPACITOR,VARIABLE	1
27	PAHZZ	14752	652A-1-A-105K	CAPACITOR,FIXED,MET	1
28	PAHZZ	81349	CX12N474K	CAPACITOR,FIXED,ELE	1
29	PAHZZ	81349	JANIN914	SEMICONDUCTOR DEVIC	8
30	PGHZZ	81349	M38510/05202BCB	MICROCIRCUIT,DIGITA	2
31	PGHZZ	04713	MC1355P	MICROCIRCUIT,LINEAR	1
32	PGHZZ	01295	SN7400N	MICROCIRCUIT,DIGITA	1
33	PGHZZ	81349	M38510/05802BCB	MICROCIRCUIT,DIGETA	1
34	PGHZZ	02735	CD4011AE	MICROCIRCUIT,DIGITA	1
35	PAHZZ	78429	4435-1K	COIL,ELECTRICAL	3
36	PAHZZ	06560	4445-4K	COIL,RADIO FREQUENC	1
37	PAHZZ	59474	4465-2J	COIL,RADIO FREQUENC	1
38	PAHZZ	59474	15A561J	COIL,RADIO FREQUENC	2
39	PAHZZ	96906	M590539-15	COIL,ELECTRICAL	2
40	PAHZZ	18324	SD215EE	SEMICONDUCTOR DEVIC	3
41	PAHZZ	04713	2N3906	TRANSISTOR	8
42	PAHZZ	04713	2N3904	TRANSISTOR	6
43	PAHZZ	03508	D39C2	TRANSISTOR	1
44	PAHZZ	81349	RCR20G47IJS	RESISTOR,FIXED,COMP	1
45	PAHZZ	81349	RNC55K2002FS	RESISTOR,FIXED,FILM	7
46	PAHZZ	81349	RN55D1002F	RESISTOR,FIXED,FILM	1

SECTION II

TM11-6625-3059-24P

(1) ITEM NO	(2) SMR CODE	(3) FSCM	(4) PART NUMBER	(5) DESCRIPTION AND USABLE ON CODES (UOC)	(6) QTY
47	PAHZZ	81349	RCR20G562JS	RESISTOR, FIXED, COMP	2
48	PAHZZ	81349	RCR20G201JS	RESISTOR, FIXED, COMP	4
49	PAHZZ	81349	RCR20C5110JS	RESISTOR, FIXED, COMP	3
50	PAHZZ	81349	RCR20G393JS	RESISTOR, FIXED, COMP	1
51	PAHZZ	73138	72XWRIK	RESISTOR, VARIABLE, N	1
52	PAHZZ	81349	RNC55K3321FS	RESISTOR, FIXED, FILM	1
53	PAHZZ	81349	RNC55K6811FS	RESISTOR, FIXED, FILM	1
54	PAHZZ	81349	RNC55K1000FS	RESISTOR, FIXED, FILM	2
55	PAHZZ	81349	RCR20G820JS	RESISTOR, FIXED, COMP	4
56	PAHZZ	73138	72XWR100K	RESISTOR, VARIABLE, N	2
57	PAHZZ	81349	RNC55K4753FS	RESISTOR, FIXED, FILM	2
58	PAHZZ	81349	RNC55K5110FS	RESISTOR, FIXED, FILM	1
59	PAHZZ	81349	RCR20G752JS	RESISTOR, FIXED, COMP	1
60	PAHZZ	81349	RNC55K1401FS	RESISTOR, FIXED, FILM	1
61	PAHZZ	81349	RCR20G102JS	RESISTOR, FIXED, COMP	1
62	PAHZZ	81349	RCR20G470JS	RESISTOR, FIXED, COMP	1
63	PAHZZ	81349	RCR20G202JS	RESISTOR, FIXED, COMP	1
64	PAHZZ	81349	RNC60D2001F	RESISTOR, FIXED, FILM	2
65	PAHZZ	81349	RCR20G100JS	RESISTOR, FIXED, COMP	1
66	PAHZZ	81369	RNC55K1001FS	RESISTOR, FIXED, FILM	1
67	PAHZZ	81349	RCR20G122JS	RESISTOR, FIXED, COMP	4
68	PAHZZ	81349	RCR20G303JS	RESISTOR, FIXED, COMP	1
69	PAHZZ	81349	RNCSSK7500FS	RESISTOR, FIXED, FILM	1
70	PAHZZ	81349	RCR20G472JS	RESISTOR, FIXED, COMP	2
71	PAHZZ	81349	RNC55K3091FS	RESISTOR, FIXED, FILM	2
72	PAHZZ	81349	RNC55K5111FS	RESISTOR, FIXED, FILM	1
73	PAHZZ	81349	NC55K8251FS	RESISTOR, FIXED, FILM	1
74	PAHZZ	81349	RNC55K4021FS	RESISTOR, FIXED, FILM	1
75	PAHZZ	81349	RCR20G391JS	RESISTOR, FIXED, COMP	3
76	PAHZZ	81349	RNC55K1651FS	RESISTOR, FIXED, FILM	1
77	PAHZZ	81349	RNC55K1003FS	RESISTOR, FIXED, FILM	1
78	PAHZZ	81349	RNC55K3923FS	RESISTOR, FIXED, FILM	2
79	PAHZZ	81349	RCR20G103JS	RESISTOR, FIXED, COMP	1
80	PAHZZ	81349	RCR20G302JS	RESISTOR, FIXED, COMP	2
81	PAHZZ	81349	RCR20G473JS	RESISTOR, FIXED, COMP	1
82	PAHZZ	81349	RCR20G014JS	RESISTOR, FIXED, COMP	1
83	PAHZZ	81349	RCR20G914JS	RESISTOR, FIXED, COMP	2
84	PAHZZ	81349	RCR20GS514JS	RESISTOR, FIXED, COMP	3
85	PAHZZ	81349	RCR20G223JS	RESISTOR, FIXED, COMP	9
86	PAHZZ	81349	RNC55K2003FS	RESISTOR, FIXED, FILM	1
87	PAHZZ	81349	RNC55K4752FS	RESISTOR, FIXED, FILM	2
88	PAHZZ	81349	RCR20G512JS	RESISTOR, FIXED, COMP	2
89	PAHZZ	81349	RCR20G154JS	RESISTOR, FIXED, COMP	1
90	PAHZZ	81349	RCR20G622JS	RESISTOR, FIXED, COMP	1
91	PAHZZ	04901	4673046	SOCKET, PLUG-IN ELEC	15
92	PAHZZ	04901	473019	SOCKET, PLUG-IN ELEC	7
93	PAHZZ	04901	822188	CONTACT SPRING	1
94	PAHZZ	04901	473051	SOCKET, PLUG-IN ELEC	3
95	XBHZZ	53507	R-1007-A-8	EXTRACTOR, ELECTRICAL	2
96	PAHZZ	04901	473041	SOCKET, PLUG-IN ELEC	5

END OF FIGURE

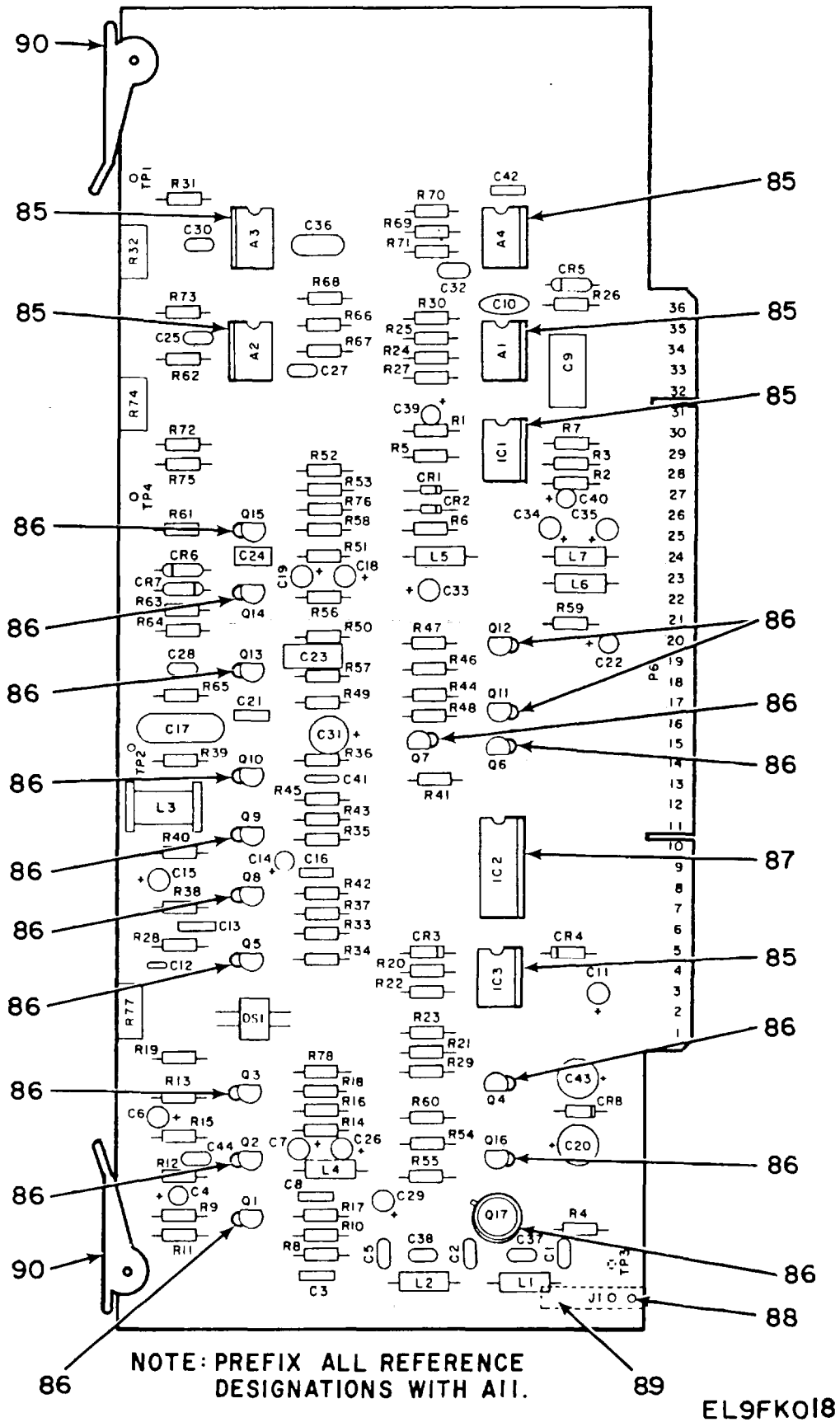


Figure 11. CIRCUIT CARD ASSEMBLY, AM (A11), (SHEET 1 of 2).

LEGEND

REF. DES.	ITEM NO.	REF. DES.	ITEM NO.	REF. DES.	ITEM NO.	REF. DES.	ITEM NO.	REF. DES.	ITEM NO.	REF. DES.	ITEM NO.	REF. DES.	ITEM NO.	REF. DES.	ITEM NO.
A1	1	C18	8	C39	7	L4	36	R1	42	R22	42	R43	70	R64	77
A2	2	C19	8	C40	25	L5	37	R2	43	R23	58	R44	42	R65	75
A3	2	C20	13	C41	4	L6	36	R3	42	R24	59	R45	47	R66	78
A4	3	C21	6	C42	6	L7	36	R4	44	R25	60	R46	69	R67	79
C1	4	C22	7	C43	13	Q1	38	R5	45	R26	59	R47	47	R68	80
C2	5	C23	14	C44	26	Q2	38	R6	46	R27	61	R48	69	R69	60
C3	6	C24	15	CR1	27	Q3	39	R7	45	R28	62	R49	52	R70	60
C4	7	C25	16	CR2	27	Q4	40	R8	47	R29	63	R50	49	R71	81
C5	4	C26	8	CR3	28	Q5	39	R9	48	R30	64	R51	71	R72	64
C6	8	C27	17	CR4	28	Q6	39	R10	49	R31	64	R52	71	R73	82
C7	8	C28	18	CR5	29	Q7	39	R11	50	R32	65	R53	49	R74	65
C8	6	C29	8	CR6	30	Q8	38	R12	51	R33	49	R54	72	R75	82
C9	9	C30	19	CR7	30	Q9	38	R13	51	R34	66	R55	60	R76	53
C10	10	C31	20	CR8	27	Q10	39	R14	52	R35	47	R56	53	R77	83
C11	8	C32	21	DS1	31	Q11	39	R15	53	R36	67	R57	73	R78	84
C12	11	C33	8	IC1	32	Q12	38	R16	53	R37	49	R58	73		
C13	6	C34	8	IC2	33	Q13	38	R17	54	R38	50	R59	53		
C14	7	C35	8	IC3	32	Q14	38	R18	47	R39	68	R60	74		
C15	8	C36	22	L1	34	Q15	39	R19	55	R40	53	R61	75		
C16	6	C37	23	L2	34	Q16	38	R20	56	R41	69	R62	76		
C17	12	C38	24	L3	35	Q17	41	R21	57	R42	43	R63	77		

NOTE: PREFIX ALL REFERENCE DESIGNATIONS WITH A11.

EL9FK017

Figure 11. CIRCUIT CARD ASSEMBLY, AM (A11), (SHEET 2 of 2).

SECTION II

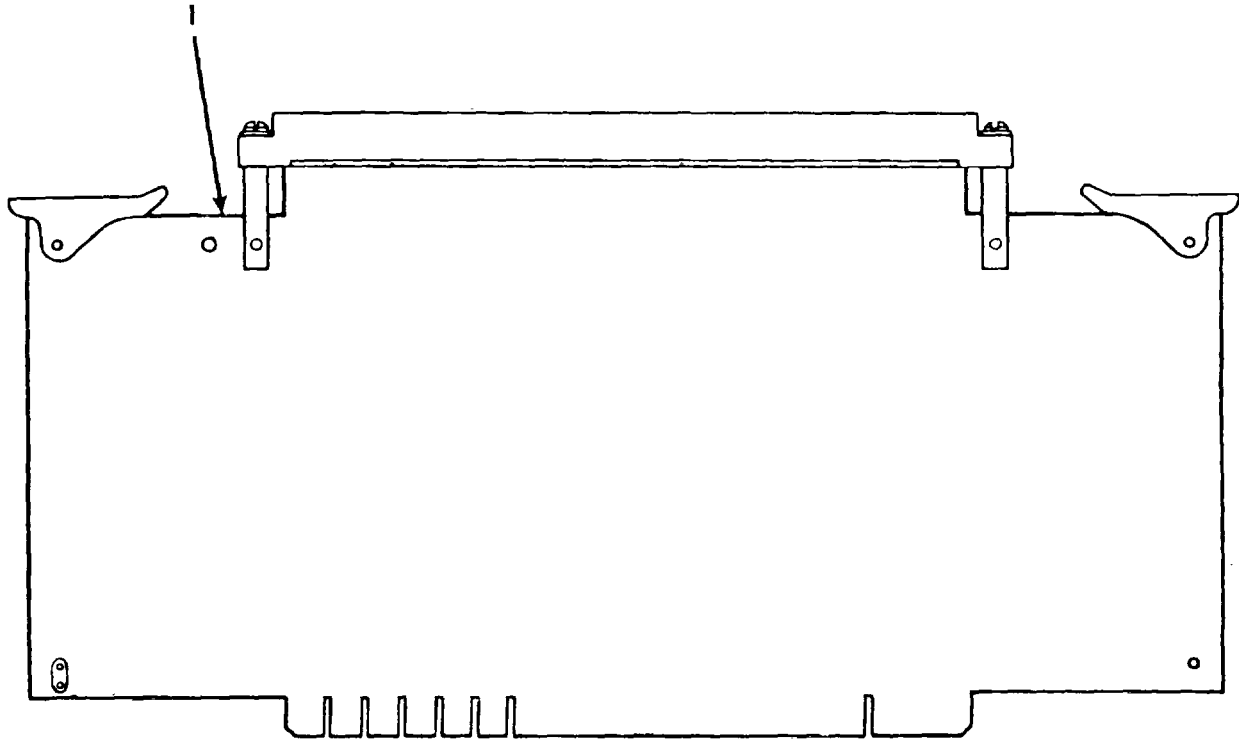
TM11-6625-3059-24P

(1) ITEM NO	(2) SMR CODE	(3) FSCM	(4) PART NUMBER	(5) DESCRIPTION AND USABLE ON CODES (UOC) GROUP 05 CIRCUIT CARD ASSEMBLY AM (A11)	(6) QTY
FIG 11					
1	PGHZZ	81349	M38510/10103BPC	MICROCIRCUIT,LINEAR	1
2	PGHZZ	27014	LM310N	MICROCIRCUIT,LINEAR	2
3	PAHZZ	01295	LF356P	AMPLIFIER.....	1
4	PAHZZ	72136	DM5-FC-910J	CAPACITOR,FIXED,M	3
5	PAHZZ	81349	CMR03F181GOAR	CAPACITOR,FIXED,MIC	1
6	PAHZZ	10933	SR215E104MAA	CAPACITOR,FIXED,CER	6
7	PAHZZ	56289	196D105X9035HA1	CAPACITOR,FIXED,ELE	4
8	PAHZZ	56289	196D106X9025KAI	CAPACITOR,FIXED,ELE	11
9	PAHZZ	14752	652A-1-A-105K	CAPACITOR,FIXED,MET	1
10	PAHZZ	60705	561CCOGBA102AG33	CAPACITOR,FIXED.CER6	1
OJ					
11	PAHZZ	10933	SR151C102KAA	CAPACITOR,FXD,CER.....	1
12	PAHZZ	72136	DMI9-392-J	CAPACITOR,FIXED,MIC	1
13	PCHZZ	12345	SM25-VB-100M	CAPACITOR,FIXED,ELE	2
14	PAHZZ	27735	MPC53-15-50-2	CAPACITOR,FIXED	1
15	PAHZZ	00656	SR305E105MAA	CAPACITOR,FIXED.CER	1
16	PAHZZ	72136	DM5-FC-IOIF	CAPACITOR,FIXED,MIC	1
17	PAHZZ	72136	DM5-FA-201F	CAPACITOR,FIXED,MIC	1
18	PAHZZ	72136	DM5-FA-201J	CAPACITOR,FIXED,MIC	1
19	PAHZZ	72136	DM5-FC-910F	CAPACITOR,FIXED,MIC	1
20	PAHZZ	56289	196D107X9020TE4	CAPACITOR,FIXED,ELE	1
21	PAHZZ	72136	DM5-FA-181F	CAPACITOR,FIXED,MIC	1
22	PAHZZ	81349	CM05EA102F	CAPACITOR,FIXED,MIC	1
23	PAHZZ	81349	CMR03C6RODOCR	CAPACITOR,FIXED,MIC	1
24	PAHZZ	72136	DMSCCO30D03	CAPACITOR,FIXED,MIC	1
25	PAHZZ	56289	1960156X9020KA1	CAPACITOR,FIXED,ELE	1
26	PAHZZ	81349	CMR03E200DOCR	CAPACITOR,FIXED,MIC	1
27	PAHZZ	81349	JANLN914	SEMICONDUCTOR DEVIC	3
28	PAHZZ	04713	1N5231B	SEMICONDUCTOR DEVIC	2
29	PAHZZ	07263	FDH30000	SEMICONDUCTOR DEVIC	1
30	PAHZZ	13499	353-3691-030	SEMICONDUCTOR DEVIC	1
31	PAHZZ	27014	CLM6500	PHOTO MODULATOR.....	1
32	PGHZZ	26916	058-001691	MICROCIRCUIT,LINEAR	2
33	PGHZZ	81349	M38510/052028CB	MICROCIRCUIT,DIGITA	1
34	PAHZZ	59474	1315-3J	COIL,RADIO FREQUENC.....	2
35	PAHZZ	04213	6200-10	COIL,RADIO FREQUENC.....	1
36	PAHZZ	78429	4435-1K	COIL,ELECTRICAL	3
37	PAHZZ	78429	4465-2J	INDUCTOR.....	1
38	PAHZZ	04713	2N3906	TRANSISTOR	8
39	PAHZZ	04713	2N3904	TRANSISTOR	7
40	PAHZZ	80131	2N4403	TRANSISTOR	1
41	PAHZZ	04713	2N3053	TRANSISTOR	1
42	PAHZZ	81349	RCR20G103JS	RESISTOR,FIXED,COMP	4
43	PAHZZ	81349	RCR200G112JS	RESISTOR,FIXED,COMP	2
44	PAHZZ	81349	RCR20G471JS	RESISTOR,FIXED,COMP	1
45	PAHZZ	81349	RNC55KI212FS	RESISTOR,FIXED,FILM	2

SECTION II

(1) ITEM NO	(2) SMR CODE	(3) FSCM	(4) PART NUMBER	(5) DESCRIPTION AND USABLE ON CODES (UOC)	(6) QTY
46	PAHZZ	81349	RCR20G153JS	RESISTOR, FIXED, COMP	1
47	PAHZZ	81349	RCR200G511JS	RESISTOR, FIXED, COMP	5
48	PAHZZ	81349	RCR20G102JS	RESISTOR, FIXED, COMP	1
49	PAHZZ	81349	RCR20G332JS	RESISTOR, FIXED, COMP	5
50	PAHZZ	81349	RCR20G153JS	RESISTOR, FIXED, COMP	2
51	PAHZZ	81349	RCR20G562JS	RESISTOR, FIXED, COMP	2
52	PAHZZ	81349	RCR20G472JS	RESISTOR, FIXED, COMP	2
53	PAHZZ	81349	RCR20G470JS	RESISTOR, FIXED, COMP	6
54	PAHZZ	81349	RCR20G331JS	RESISTOR, FIXED, COMP	1
55	PAHZZ	81349	RCR200G362JS	RESISTOR, FIXED, COMP	1
56	PAHZZ	81349	RCR20G154JS	RESISTOR, FIXED, COMP	1
57	PAHZZ	81349	RNC55K7502FS	RESISTOR, FIXED, FILM	1
58	PAHZZ	81349	RNC55K9091FS	RESISTOR, FIXED, FILM	1
59	PAHZZ	81349	RNC55K2003FS	RESISTOR, FIXED, FILM	2
60	PAHZZ	81349	RN55D1002F	RESISTOR, FIXED, FILM	4
61	PAHZZ	81349	RNC55K1403FS	RESISTOR, FIXED, FILMH	1
62	PAHZZ	81349	RCR200G474JS	RESISTOR, FIXED, COMP	1
63	PAHZZ	81349	RCR20G222JS	RESISTOR, FIXED, COMP	1
64	PAHZZ	81349	RNC55K4753FS	RESISTOR, FIXED, FILM	3
65	PAHZZ	73138	72XWR200	RESISTOR, VARIABLE, N.	2
66	PAHZZ	81349	RCR20G752JS	RESISTOR, FIXED, COMP	1
67	PAHZZ	81349	RCR20G912JS	RESISTOR, FIXED, COMP	1
68	PAHZZ	81349	RCR20G113JS	RESISTOR, FIXED, COMP	1
69	PAHZZ	81349	RCR20G202JS	RESISTOR, FIXED, COMP	3
70	PAHZZ	81349	RCR20G302JS	RESISTOR, FIXED, COMP	1
71	PAHZZ	81349	RCR200G822JS	RESISTOR, FIXED, COP	2
72	PAHZZ	81349	RNC55K2491FS	RESISTOR, FIXED, FILM	1
73	PAHZZ	81349	RCR20G221JS	RESISTOR, FIXED, COMP	2
74	PAHZZ	81349	RCR20G561JS	RESISTOR, FIXED, COMP	1
75	PAHZZ	81349	RNC55K9531FS	RESISTOR, FIXED, FILM	2
76	PAHZZ	81349	RNC55K3011FS	RESISTOR, FIXED, FILM	1
77	PAHZZ	81349	RNC55K1001FS	RESISTOR, FIXED, FILM	2
78	PAHZZ	81349	RNC55K2432FS	RESISTOR, FIXED, FILM	1
79	PAHZZ	81349	RNC55K3321FS	RESISTOR, FIXED, FILM	1
80	PAHZZ	81349	RNC55K2211FS	RESISTOR, FIXED, FILM	1
81	PAHZZ	81349	RNC55K3091FS	RESISTOR, FIXED, FILM	1
82	PAHZZ	81349	RNC55K1003FS	RESISTOR, FIXED, FILM	2
83	PAHZZ	73138	72XWR100K	RESISTOR, VARIABLE, N.	1
84	XBHZZ	81349	RCR20G101JS	RESISTOR, FIXED, COMP	1
85	PAHZZ	04901	473041	SOCKET, PLUG-IN ELEC	6
86	PAHZZ	04901	473046	SOCKET, PLUG-IN ELEC	17
87	PAHZZ	04901	473019	SOCKET, PLUG-IN ELEC	1
88	PAHZZ	04901	477240	PIN	4
89	PAHZZ	04901	822188	CONTACT SPRING	1
90	XBHZZ	53507	R-1007-A-7	EXTRACTOR, ELECTRICA	2

END OF FIGURE



EL9FK006

Figure 12. EXTENDER BOARD.

SECTION III

TM11-6625-3059-24P

(1) ITEM NO	(2) SMR CODE	(3) FSCM	(4) PART NUMBER	(5) DESCRIPTION AND USABLE ON CODES (UOC) GROUP 60 SPECIAL TOOL FOR GENERAL SUPPORT	(6) QTY
-------------------	--------------------	-------------	-----------------------	--	------------

FIG 12

1	PAHZZ	04901	839093	EXTENDER CARD, ELEC..... BOI: 1 AUTH PER EQUIPMENT	
---	-------	-------	--------	---	--

END OF FIGURE

NATIONAL STOCK NUMBER AND PART NUMBER INDEX

NATIONAL STOCK NUMBER INDEX					
STOCK NUMBER	FIG.	ITEM	STOCK NUMBER	FIG.	ITEM
5905-00-004-6114	9	48	5905-00-114-5425	11	55
5905-00-004-6116	9	60	5905-00-114-5438	10	49
5905-00-004-6117	10	60	5905-00-116-8566	7	64
5905-00-004-6121	9	59	5905-00-116-8568	7	39
5905-00-104-5755	10	65		10	59
5905-00-104-5756	9	73		11	66
5905-00-104-8334	7	60	5905-00-116-8569	7	44
	11	54	5905-00-116-8570	11	67
5905-00-104-8336	7	63	5910-00-116-8931	7	10
	9	33		11	24
	10	82	5961-00-124-0113	7	34
5905-00-104-8345	7	61	5961-00-124-0117	7	33
5905-00-104-8348	11	49		11	40
5905-00-104-8349	7	41	5905-00-131-9395	7	36
	11	47	5962-00-138-5248	10	32
5905-00-104-8350	7	37	5905-00-138-6996	11	78
	11	73	5905-00-139-1674	8	18
5961-00-106-0673	7	15	5905-00-140-7143	10	52
5905-00-106-1273	11	46		11	79
	11	50	5905-00-140-7182	8	24
5905-00-106-1282	9	70		10	69
	10	85	5905-00-141-0591	7	56
5905-00-106-9344	7	54		9	58
	9	71		10	79
5905-00-106-9348	10	89		11	42
	11	56	5905-00-141-0592	10	67
5905-00-106-9352	11	43	5905-00-141-0594	10	90
5961-00-107-2678	7	30	5905-00-141-0595	10	70
5905-00-110-0196	7	38		11	52
	9	68	5905-00-141-0596	8	19
	10	61		10	81
	11	48	5905-00-141-0597	9	34
5905-00-110-0310	7	43	5905-00-141-0598	7	57
5910-00-110-8715	11	12		11	74
5905-00-111-4734	7	42	5905-00-141-0599	10	50
	10	62	5905-00-141-0600	11	71
	11	53	5905-00-141-0727	7	58
5905-00-111-4674	7	40		10	48
	10	75	5905-00-141-1071	11	62
5905-00-111-4743	10	55	5905-00-141-1116	10	47
5905-00-111-4744	9	72		11	51
	10	88	5905-00-141-1130	7	45
5905-00-111-4840	10	84	5905-00-141-1168	9	74
5905-00-111-4858	7	53		11	63
	10	44	5905-00-141-1187	9	66
	11	44	5905-00-142-0957	9	63
5905-00-111-6010	10	83	5961-00-146-8292	9	21
5905-00-114-5359	11	68	5961-00-147-9600	8	13
5905-00-114-5417	10	80	5962-00-169-4727	7	20
	11	70		9	25

NATIONAL STOCK NUMBER AND PART NUMBER INDEX

NATIONAL STOCK NUMBER INDEX					
STOCK NUMBER	FIG.	ITEM	STOCK NUMBER	FIG.	ITEM
5962-00-169-4727	10	34	5905-00-432-0400	9	65
5905-00-180-8301	7	51	5905-00-432-0402	10	45
5905-00-180-8314	7	50	5905-00-432-0408	9	45
5961-00-192-2593	7	28	5905-00-432-0416	10	74
5910-00-195-4298	8	6	5905-00-432-0421	8	22
	10	15		9	50
	11	10	5905-00-432-0422	10	72
5910-00-199-1595	10	19	5905-00-432-0424	9	47
	11	7	5905-00-432-0425	9	69
5920-00-199-9498	2	6	5905-00-432-0439	11	75
5905-00-200-9689	10	51	5905-00-432-6379	11	72
5910-00-205-9119	7	3	5905-00-432-6382	10	71
	8	8		11	81
	9	7	5905-00-432-6384	9	57
	10	8	5905-00-432-6388	9	46
	11	8	5905-00-432-6389	9	51
5905-00-208-4293	10	77	5905-00-432-9151	9	44
	11	82	5905-00-432-9152	11	76
5961-00-227-9783	7	31	5961-00-437-6394	11	28
5905-00-243-1450	11	80	5961-00-444-6667	8	12
5905-00-247-8682	9	64	5910-00-446-5542	10	16
5930-00-249-1551	1	5	5905-00-451-7275	10	53
5905-00-250-6044	9	55	5905-00-479-3990	7	62
5905-00-250-6220	10	87		10	46
5905-00-258-5266	9	40		11	60
5905-00-258-5418	9	67	5905-00-481-1328	9	43
5905-00-258-5882	9	61	5905-00-481-1329	7	59
5905-00-264-4027	11	57	5961-00-493-0793	7	32
5905-00-302-4120	9	54	5910-00-515-2359	7	12
5905-00-307-3812	8	20		9	8
5310-00-343-3517	8	28		10	7
5905-00-348-2713	10	58	5905-00-554-8434	9	56
5935-00-355-4919	3	20	5905-00-588-9406	9	49
5961-00-391-0297	7	16	5905-00-607-9712	9	62
	11	30		10	56
5961-00-400-1521	7	17		11	83
5905-00-402-7049	7	48	5905-00-646-5957	3	17
5910-00-405-7635	10	23	5905-00-721-3701	10	76
5905-00-412-0758	7	46	5905-00-721-3739	10	73
5910-00-422-5277	10	14	5905-00-758-3115	10	86
5905-00-431-7810	9	41		11	59
5905-00-431-7825	11	45	5905-00-759-8344	11	61
5905-00-431-7833	8	21	5935-00-835-0510	2	1
	9	39		3	22
	11	58	5961-00-842-9864	7	18
5905-00-432-0380	10	54		9	32
5905-00-432-0381	9	38		10	29
	10	66		11	27
	11	77	5305-00-855-0972	5	11
5905-00-432-0387	9	53	5961-00-892-8706	7	27

NATIONAL STOCK NUMBER AND PART NUMBER INDEX

NATIONAL STOCK NUMBER INDEX					
STOCK NUMBER	FIG.	ITEM	STOCK NUMBER	FIG.	ITEM
5961-00-892-8706	10	42	5962-01-084-6425	7	22
	11	39	5910-0-086-6382	7	13
5950-00-893-8650	10	39		11	20
5935-00-929-3516	1	8	5910-01-093-6316	11	5
5961-00-931-0372	7	29	5935-01-093-9453	8	25
	10	41		9	76
	11	38		10	96
5905-00-935-8539	7	47		11	85
	10	63	5962-01-110-3482	8	15
	11	69	5962-01-110-7277	8	14
5905-00-935-8542	10	68	5962-01-110-8115	9	5
5905-00-935-8543	7	55	5962-01-113-6179	9	24
5961-00-957-6865	8	11		10	33
5961-00-985-9073	11	41	5962-01-118-0614	9	28
5962-01-003-2578	9	23	5962-01-141-2594	8	1
5905-01-007-1429	9	42		10	1
5910-01-011-1146	11	25		11	1
5905-01-011-8211	9	52	5910-01-141-5335	10	28
5962-01-014-8081	7	21	5950-01-145-2167	10	36
	9	27	5962-01-157-3646	9	4
5935-01-016-5151	3	18		10	2
5905-01-017-4874	10	57	5975-01-166-7683	1	6
	11	64	5975-01-166-7684	1	1
5962-01-020-9429	9	2	5950-01-167-8960	3	8
	11	2	6625-01-168-1193	6	8
5962-01-021-5875	7	19	6625-01-168-1194	3	37
5962-01-024-9908	10	31	6625-01-168-1195	3	28
5962-01-025-2594	10	30	6625-01-168-1196	3	30
	11	33	5935-01-168-7379	2	7
5910-01-029-0728	9	10	5999-01-168-7418	4	4
5962-01-030-3135	9	1	5999-01-168-7419	6	12
5905-01-035-5065	7	49	5360-01-171-6059	4	2
5905-01-036-7861	10	78	6625-01-180-7982	3	19
5905-01-038-1108	11	65	6625-01-180-7983	3	23
5910-01-038-7894	10	10	6625-01-180-7984	3	33
	11	26	6625-01-180-7985	3	25
5910-01-038-7898	9	17	6625-01-180-7986	3	24
	10	18	6625-01-180-7987	3	21
5910-01-038-7903	11	23	6625-01-180-8068	6	14
5962-01-039-9414	11	32	6625-01-180-8069	3	26
5905-01-040-1598	8	23	6625-01-180-8070	3	27
5961-01-044-3765	10	40	5970-01-180-8959	3	7
5962-01-047-7386	10	4	5970-01-180-9868	3	5
5961-01-055-5274	9	22	5970-01-180-9869	4	5
	11	29	5905-01-181-2672	7	65
5950-01-062-2550	10	37	5910-01-181-2970	7	4
5962-01-067-2049	7	1	5910-01-181-2984	9	13
5935-01-071-9554	8	17	5910-01-181-2985	9	20
5905-01-082-5255	7	52		10	27
5962-01-083-5992	9	29		11	9

NATIONAL STOCK NUMBER AND PART NUMBER INDEX

STOCK NUMBER	NATIONAL STOCK NUMBER INDEX		STOCK NUMBER	FIG.	ITEM
	FIG.	ITEM			
5910-01-181-2986	9	18			
5910-01-181-6584	9	11			
5910-01-181-6585	9	14			
5910-01-181-6586	9	12			
5315-01-181-7745	11	88			
5910-01-181-8890	7	14			
5340-01-183-1339	2	3			
5355-01-183-5622	1	4			

**NATIONAL STOCK NUMBER AND PART NUMBER INDEX
PART NUMBER INDEX**

FSCM	PART NUMBER	STOCK NUMBER	FIG.	ITEM
88044	AN505C4R6		3	14
			6	6
04901	B-303GR	5975-01-166-7684	1	1
04901	B-303WT	5975-01-166-7683	1	6
02735	CA3080AS	5962-01-110-8115	9	5
02735	CA31305S	5962-01-030-3135	9	1
02735	CD4011AE	5962-00-169-4727	7	20
			9	25
			10	34
02735	CD40518D/3	5962-01-003-2578	9	23
14655	CD5FC101G03	5910-00-405-7635	10	23
90201	CGS222U020BB1		8	4
90201	CGS552U015BB1		8	3
70903	CH9461		1	12
27014	CLM6500		11	31
81349	CMR03C100DOCR	5910-01-029-0728	9	10
81349	CMR03C6RODOCR	5910-01-038-7903	11	23
81349	CMR03E200DOCR	5910-01-038-7894	10	10
			11	26
81349	CMR03E470GOCR	5910-01-038-7898	9	17
			10	18
81349	CMR03FI81GOAR	5910-01-093-6316	11	5
81349	CM05EA102F		11	22
81349	CX12N474K	5910-01-141-5335	10	28
56289	C067B251E331K		8	9
72136	DMI5-E471		9	16
72136	DM19-392-J	5910-00-110-8715	11	12
72136	DM5-CC-080K		7	8
			10	6
72136	DMS-CC-220J		10	17
72136	OM5-EC-120J		7	11
72136	DM5-EC-360J		7	7
72136	DM5-EC-390J		10	25
72136	DM5-FA-181F		11	21
72136	DMS-FA-201F		11	17
72136	DM5-FA-201J		10	22
			11	18
72136	OM5-FC-101F		11	16
72136	DM5-FC-91 OF		11	19
72136	DM5-FC-910J		10	9
			11	4
72136	DMS-FY-221J		10	20
72136	DMS-FY-241F		9	15
72136	OM5-FY-241J		10	21
72136	DM5-FY-251F		10	24
72136	DMS-FY-251J		10	5
72136	DM5CC030D03	5910-00-116-8931	7	10
			11	24
03508	D39C2		7	35
			10	43
73445	ET102X016A02	5910-00-446-5542	10	16

**NATIONAL STOCK NUMBER AND PART NUMBER INDEX
PART NUMBER INDEX**

FSCM	PART NUMBER	STOCK NUMBER	FIG.	ITEM
05245	F-65001	5935-01-168-7379	2	7
07263	FDH300	5961-01-055-5274	9	22
			11	29
81349	F028125V6-11/4A		2	6
81349	F028250V1-2A	5920-00-199-9498	2	6
24539	GPD463	5962-01-067-2049	7	1
81349	JAN1N3611	5961-00-957-6865	8	11
81349	JAN1N4467	5961-00-147-9600	8	13
81349	JAN1N914	5961-00-842-9864	7	18
			9	32
			10	29
			11	27
01295	LF356P		9	6
			11	3
27014	LM310N	5962-01-020-9429	9	2
			11	2
27014	LM318N	5962-01-047-7386	10	4
04713	MC1355P	5962-01-024-9908	10	31
27735	MPC-53-001-50-2	5910-01-181-2986	9	18
27735	MPC-53-002-50-2	5910-01-181-6585	9	14
27735	MPC-53-01-50-2	5910-01-181-6586	9	12
27735	MPC-53-047-50-2	5910-01-181-2984	9	13
27735	MPC-53-1-50-2	5910-01-181-6584	9	11
27735	MPC53-.15-50-2		11	14
04713	MPS-A12	5961-00-146-8292	9	21
04713	MPS3640	5961-00-192-2593	7	28
04713	MPS6507	5961-00-493-0793	7	32
96906	MS24629-23	5305-00-855-0972	5	11
96906	MS35206-243		3	3
96906	MS35216-13		3	34
			6	10
96906	M535216-16		4	1
96906	MS35333-57		6	11
96906	MS35335-59		3	4
96906	MS35337-78		6	3
96906	MS35616-16		6	2
96906	MS35649-245		6	4
96906	MS90539-15	5950-00-893-8650	10	39
81349	M21097/21-163	5935-00-355-4919	3	20
81349	M38510-070018CB	5962-01-021-5875	7	19
81349	M38510/O5101BCB	5962-01-014-8081	7	21
			9	27
81349	M38510/052028CB	5962-01-025-2594	10	30
			11	33
81349	M38510/05802BC8	5962-01-113-6179	9	24
			10	33
81349	M38510/06101BEB	5962-01-084-6425	7	22
81349	M38510/10103BPC	5962-01-141-2594	8	1
			10	1
			11	1
81349	M38510/17101BCB	5962-01-083-5992	9	29

**NATIONAL STOCK NUMBER AND PART NUMBER INDEX
PART NUMBER INDEX**

FSCM	PART NUMBER	STOCK NUMBER	FIG.	ITEM
81349	M3851011201BCB		10	3
18324	NE5534AN	5962-01-157-3646	9	4
			10	2
71590	PB10-2-MOD		1	9
71590	PB10-3-MOD		1	3
71590	PB10-4-MOD		1	10
71590	P810-5-MOD		1	2
03888	PME-55-T2		9	35
			5	36
			9	37
53507	R-100-A-7		11	90
53507	R-1007-A-8		10	95
14752	RA3038-1051		9	30
81349	RCR05G101JS	5905-00-180-8301	7	51
81349	RCR05G103JS	5905-01-035-5065	7	49
81349	RCR05G470JS	5905-00-402-7049	7	48
81349	RCR05G510JS	5905-00-412-0758	7	46
81349	RCR05G513JS	5905-00-180-8314	7	50
81349	RCR20G100JS	5905-00-104-5755	10	65
81349	RCR20G101JS	5905-00-106-9344	7	54
			9	71
			11	84
81349	RCR20G012JS	5905-00-110-0196	7	38
			9	68
			10	61
			11	48
81349	CR20G103JS	5905-00-141-0591	7	56
			9	58
			10	79
			11	42
81349	RCR20G1004JS	5905-00-104-8336	7	63
			9	33
			10	82
81349	RCR20G105JS	5905-00-104-5756	9	73
81349	RCR20G112JS	5905-00-106-9352	11	43
81349	RCR20G113JS	5905-00-114-5359	11	68
81349	RCR20G122JS	5905-00-141-0592	10	67
81349	RCR20G131JS	5905-00-131-9395	7	36
81349	RCR20G153JS	5905-00-106-1273	11	46
			11	50
81349	RCR20G154JS	5905-00-106-9348	10	89
			11	56
81349	RCR20G201JS	5905-00-141-0727	7	58
			10	48
81349	RCR20G202JS	5905-00-935-8539	7	47
			10	63
			11	69
81349	RCR20G203JS	5905-00-141-1187	9	66
81349	RCR20G221JS	5905-00-104-8350	7	37
			11	73
81349	RCR200G222JS	5905-00-141-1168	9	74

**NATIONAL STOCK NUMBER AND PART NUMBER INDEX
PART NUMBER INDEX**

FSCM	PART NUMBER	STOCK NUMBER	FIG.	ITEM
81349	RCR20G222JS	5905-00-141-1168	11	63
81349	RCR20G223JS	5905-00-106-1282	9	70
			10	85
81349	RCR20G272JS	5905-00-141-1130	7	45
81349	RCR20G302JS	5905-00-114-5417	10	80
			11	70
81349	RCR20G303JS	5905-00-935-8542	10	68
81349	RCR20G330JS	5905-00-935-8543	7	55
81349	RCR20G331JS	5905-00-104-8334	7	60
			11	54
81349	RCR20G332JS	5905-00-104-8348	11	49
81349	RCR20G362JS	5905-00-114-5425	11	55
81349	RCR20G391JS	5905-00-111-4742	7	40
			10	75
81349	RCR20G392JS	5905-00-110-0310	7	43
81349	RCR20G393JS	5905-00-141-0599	10	50
81349	RCR20G470JS	5905-00-111-4734	7	42
			10	62
			11	53
81349	RCR20G471JS	5905-00-111-4858	7	53
			10	44
			11	44
81349	RCR20G472JS	5905-00-141-0595	10	70
			11	52
81349	RCR20G473JS	5905-00-141-0596	8	19
			10	81
81349	RCR20G474JS	5905-00-141-1071	11	62
81349	RCR20G510JS	5905-00-114-5438	10	49
81349	RCR20G511JS	5905-00-104-8349	7	41
			11	47
81349	RCR20G512JS	5905-00-111-4744	9	72
			10	88
81349	RCR20G513JS	5905-00-141-0597	9	34
81349	RCR20G514JS	5905-00-111-4840	10	84
81349	RCR20G560JS	5905-00-104-8345	7	61
81349	RCR20G561JS	5905-00-141-0598	7	57
			11	74
81349	RCR20G562JS	5905-00-141-1116	10	47
			11	51
81349	RCR20G622JS	5905-00-141-0594	10	90
81349	RCR20G6800JS	5905-00-116-8566	7	64
81349	RCR20G752JS	5905-00-116-8568	7	39
			10	59
			11	66
81349	RCR20G820JS	5905-00-111-4743	10	55
81349	RCR20G821JS	5905-00-116-8569	7	44
81349	RCR20G822JS	5905-00-141-0600	11	71
81349	RCR20G825JS	5905-00-247-8682	9	64
81349	RCR20G912JS	5905-00-116-8570	11	67
81349	RCR20G914JS	5905-00-111-6010	10	83
91418	RMC-SM		8	2

**NATIONAL STOCK NUMBER AND PART NUMBER INDEX
PART NUMBER INDEX**

FSCM	PART NUMBER	STOCK NUMBER	FIG.	ITEM
81349	RNC55K1000FS	5905-00-432-0380	10	54
81349	RNC 55K 1001FS	5905-00-432-0381	9	38
			10	66
			11	77
81349	RNC55K1003FS	5905-00-208-4293	10	77
			11	82
81349	RNC55K1052FS	5905-00-431-7810	9	41
81349	RNC55K1053FS	5905-00-258-5266	9	40
81349	RNC55K1311FS	5905-00-004-6114	9	48
81349	RNC55KI210FS	5905-00-481-1328	9	43
81349	RNC55K1212FS	5905-00-431-7825	11	45
81349	RNC55K1271FS	5905-00-004-6116	9	60
81349	RNC55KI332FS	5905-00-432-0387	9	53
81349	RNC55KI371FS	5905-00-307-3812	8	20
81349	RNC55K1401FS	5905-00-004-6117	10	60
81349	RNC55K1403FS	5905-00-759-8344	11	61
81349	RNC55K1651FS	5905-00-721-3701	10	76
81349	RNC55KL821FS	5905-00-258-5418	9	67
81349	RNC55K1912FS	5905-00-302-4120	9	54
81349	RNC55K2000FS	5905-00-432-0400	9	65
81349	RNC55K2002FS	5905-00-432-0402	10	45
81349	RNC55K2003FS	5905-00-758-3115	10	86
			11	59
81349	RNC55K2211FS	5905-00-243-1450	11	80
81349	RNC55K2430FS	5905-00-481-1329	7	59
81349	RNC55K2432FS	5905-00-138-6996	11	78
81349	RNC55K2433FS	5905-01-011-8211	9	52
81349	RNC55K2491FS	5905-00-432-6379	11	72
81349	RNC55K2671FS	5905-00-432-0408	9	45
81349	RNC55K2672FS	5905-00-432-9151	9	44
81349	RNC55K3011FS	5905-00-432-9152	11	76
81349	RNC55K3012FS	5905-00-142-0957	9	63
81349	RNC55K3091FS	5905-00-432-6382	10	71
			11	81
81349	RNC55K3321FS	5905-00-140-7143	10	52
			11	79
81349	RNC55K3921FS	5905-00-004-6121	9	59
81349	RNC55K3923FS	5905-01-036-7861	10	78
81349	RNC55K4021FS	5905-00-432-0416	10	74
81349	RNC55K4752FS	5905-00-250-6220	10	87
81349	RNC55K4753FS	5905-01-017-4874	10	57
			11	64
81349	RNC55K4991FS	5905-00-432-0421	8	22
			9	50
81349	RNC55K5110FS	5905-00-348-2713	10	58
81349	RNC55K5111FS	5905-00-432-0422	10	72
81349	RNC55K5361FS	5905-00-258-5882	9	61
81349	RNC55K5363FS	5905-00-588-9406	9	49
81349	RNC55K5621FS	5905-00-432-6384	9	57
81349	RNC5SK5902FS	5905-00-432-0424	9	47
81349	RNC55K6191FS	5905-00-432-6388	9	46

**NATIONAL STOCK NUMBER AND PART NUMBER INDEX
PART NUMBER INDEX**

FSCM	PART NUMBER	STOCK NUMBER	FIG.	ITEM
81349	RNC55K6811FS	5905-00-451-7275	10	53
81349	RNC55K7321FS	5905-00-554-8434	9	56
81349	RNC55K7500FS	5905-00-140-7182	8	24
			10	69
81349	RNC55K7501FS	5905-00-432-6389	9	51
81349	RNC55K7502FS	5905-00-264-4027	11	57
81349	RNC55K8251FS	5905-00-721-3739	10	73
81349	RNC55K8871FS	5905-00-250-6044	9	55
81349	RNC55K9091FS	5905-00-431-7833	8	21
			9	39
			11	58
81349	RNC55K9531FS	5905-00-432-0439	11	75
81349	RNC6OD2001F		10	64
81349	RN55D1002F	5905-00-479-3990	7	62
			10	46
			11	60
81349	RN55DO1101F	5905-00-139-1674	8	18
81349	RN55D6040F	5905-00-432-0425	9	69
81349	RV4NAYSB103A	5905-00-646-5957	3	17
18324	SD215EE	5961-01-044-3765	10	40
12345	SM25-VB-100M		11	13
01295	SN7400N	5962-00-138-5248	10	32
10933	SR151C102KAA		8	7
			10	12
			11	11
10933	SR201C103KAA		7	9
			9	9
			10	11
10933	SR2 5E104MAA		7	2
			8	5
			9	19
			10	13
			11	6
00656	SR305E105MAA		11	15
04901	SSN-501-2-LT-GR	5355-01-183-5622	1	4
04713	SZ12170	5961-00-444-6667	8	12
04901	TO-5		7	71
05397	T368C107K010AS	5910-00-515-2359	7	12
			9	8
			10	7
07263	UA78MGU1C	5962-01-110-7277	8	14
07263	UA79MGU11C	5962-01-110-3482	8	15
80058	UG-625/U	5935-00-835-0510	2	1
			3	22
09353	U21-SHZQE	5930-00-249-1551	1	5
15052	VE-18		8	10
95275	VJ1210X103MF	5910-01-181-2970	7	4
91418	0.001UF20X1KVD		3	1
06665	OP-16GJ		9	3
27264	03-06-1043NDL200		3	16
27264	03-06-2041	5935-01-016-5151	3	18

**NATIONAL STOCK NUMBER AND PART NUMBER INDEX
PART NUMBER INDEX**

FSCM	PART NUMBER	STOCK NUMBER	FIG.	ITEM
26916	058-001691	5962-01-039-9414	11	32
04901	082003-1		2	11
04901	082004-1		4	13
04901	082005-1	5999-01-168-7418	4	4
04901	082006-1		3	35
04901	082007-1	6625-01-168-1193	6	8
04901	082008-1	5999-01-168-7419	6	12
04901	082009-1	6625-01-180-8n68	6	14
04901	082010-1	6625-01-168-1194	3	37
04901	082011-1	6625-01-180-8069	3	26
04901	082012-1	6625-01-180-8070	3	27
04901	082013-1	6625-01-168-1195	3	28
04901	082014-1		3	29
04901	082015-1	6625-01-168-1196	3	30
04901	082017-1		1	11
04713	IN5231B	5961-00-437-6394	11	28
59474	1315-3J		11	34
02660	143-036-07		8	16
59474	15A561J		10	38
19505	17-02-19-000		1	7
			6	1
56289	1960105X9035HA1	5910-00-199-7595	10	19
			11	7
56289	196D0106X9025KA1	5910-00-205-9119	7	3
			8	8
			9	7
			10	8
			11	8
56289	196D107X9020TE4	5910-01-086-6382	7	13
			11	20
56289	196D156X9020KA1	5910-01-011-1146	11	25
56289	196D476X9020LA3	5910-00-422-5277	10	14
04713	2N3053	5961-00-985-9073	11	41
04713	2N3866	5961-00-227-9783	7	31
04713	2N3904	5961-00-892-8706	7	27
			10	42
			11	39
04713	2N3906	5961-00-931-0372	7	29
			10	41
			11	38
80131	2N4401	5961-00-124-0113	7	34
80131	2N4403	5961-00-124-0117	7	33
			11	40
04713	2N4416	5961-00-107-2678	7	30
02660	225-23621-110	5935-01-071-9554	8	17
24931	29JJ101-1	5935-00-929-3516	1	8
04901	345024	5905-01-181-2672	7	65
13499	353-3691-030	5961-00-394-0297	7	16
			11	30
04901	410080		7	66
04901	410081		7	67

**NATIONAL STOCK NUMBER AND PART NUMBER INDEX
PART NUMBER INDEX**

FSCM	PART NUMBER	STOCK NUMBER	FIG.	ITEM
78429	4425-6K		3	2
78429	4435-1K		7	26
			9	31
			10	35
			11	36
06560	4445-4K	5950-01-145-2167	10	36
04901	446081	5950-01-167-8960	3	8
59474	4465-2J	5950-01-062-2550	10	37
			11	37
12594	470/6.3/8118	5910-01-181-8890	7	14
04901	473019		7	70
			9	78
			10	92
			11	87
04901	473041	5935-01-093-9453	8	25
			9	76
			10	96
			11	85
04901	473042		7	24
			8	27
			9	77
04901	473046		7	68
			9	75
			10	91
			11	86
04901	473051		7	72
			10	94
04901	477240	5315-01-181-7745	11	88
04901	479320		3	10
04901	479333		7	23
04901	479366		7	25
04901	483202		3	13
			3	31
04901	483207		9	80
04901	500130		2	5
28480	5082-0180	5961-00-400-1521	7	17
28480	5082-2835	5961-00-106-0673	7	15
60705	561CC0GBA102AG33	5910-00-195-4298	8	6
			10	15
60705	561CC0GBA102AG33 0J	5910-00-195-4298	11	10
04901	569190	6625-01-180-7982	3	19
04901	571132		6	13
04901	572038	6625-01-180-7985	3	25
04901	572048	6625-01-180-7986	3	24
04901	572049	6625-01-180-7987	3	21
04901	600403		5	3
04901	602969		3	32
04901	604495		4	3
04901	604496		4	8
04901	604497		4	9

**NATIONAL STOCK NUMBER AND PART NUMBER INDEX
PART NUMBER INDEX**

FSCM	PART NUMBER	STOCK NUMBER	FIG.	ITEM
04901	604498		3	15
04901	604501		3	9
04901	604502		3	36
04901	604503		2	4
04901	604505		3	11
04213	6200-10		11	35
14752	652A-1-A-105K	5910-01-181-2985	9	20
			10	27
			11	9
53110	698-3-R10K-3		9	26
73138	72PR100K	5905-01-082-5255	7	52
73138	72PR200	5905-01-040-1598	8	23
73138	72XWR1K	5905-00-200-9689	10	51
73138	72XWR0100	5905-01-007-1429	9	42
73138	72XWR100K	5905-00-607-9712	9	62
			10	56
			11	83
73138	72XWR200	5905-01-038-1108	11	65
04901	720800		2	2
04901	720801-1		6	7
04901	720803		3	6
04901	720805		4	10
04901	720809		8	26
04901	720848		9	19
04901	730681		4	12
04901	730682		4	6
04901	730685		2	9
04901	730686		7	69
29454	7410-0		7	6
04901	742064		6	5
04901	742316		4	11
04901	742317	5970-01-180-9868	3	5
04901	745195	5310-00-343-3517	8	28
04901	745202		3	12
04901	745217	5970-01-180-9869	4	5
04901	745229	5970-01-180-8959	3	7
04901	745278		5	10
04901	755117	5340-01-183-1339	2	3
04901	757510		5	5
04901	757518		5	2
04901	777052		4	7
04901	780211		2	10
04901	782516		2	8
14933	7901501EB	5962-01-118-0614	9	28
04901	793193		7	71
04901	793250		5	6
04901	796127		5	14
04901	796129		5	1
04901	812232		6	9
04901	812239		5	9
04901	812240		5	8

NATIONAL STOCK NUMBER AND PART NUMBER INDEX
PART NUMBER INDEX

FSCM	PART NUMBER	STOCK NUMBER	FIG.	ITEM
04901	812241		5	13
04901	820119		5	12
04901	822164	5360-01-171-6059	4	2
04901	822188		10	93
			11	89
04901	839093		12	1
04901	842112		5	7
04901	911028		5	4
04901	920021	6625-01-180-7984	3	33
04901	920023	6625-01-180-7983	3	23
29454	9372		10	26
29454	9373		7	5

By Order of the Secretary of the Army:

Official:

JOHN A. WICKHAM JR.
General, United States Army
Chief of Staff

DONALD J. DELANDRO
Brigadier General, United States Army
The Adjutant General

DISTRIBUTION:

To be distributed in accordance with DA Form 12-36 literature requirements for ME-525A/USM.

RECOMMENDED CHANGES TO EQUIPMENT TECHNICAL PUBLICATIONS



THEN... JOT DOWN THE DOPE ABOUT IT ON THIS FORM, CAREFULLY TEAR IT OUT, FOLD IT AND DROP IT IN THE MAIL!

SOMETHING WRONG WITH THIS PUBLICATION?

FROM: (PRINT YOUR UNIT'S COMPLETE ADDRESS)

DATE SENT

PUBLICATION NUMBER

TM 11-5825-270-10

PUBLICATION DATE

23 Jul 81

PUBLICATION TITLE

Radio Frequency R-2176/FRN

BE EXACT... PIN-POINT WHERE IT IS

PAGE NO.	PARA-GRAPH	FIGURE NO.	TABLE NO.

IN THIS SPACE TELL WHAT IS WRONG AND WHAT SHOULD BE DONE ABOUT IT:

TEAR ALONG PERFORATED LINE

PRINTED NAME, GRADE OR TITLE, AND TELEPHONE NUMBER

SIGN HERE:

DA FORM 2028-2 JUL 79

PREVIOUS EDITIONS ARE OBSOLETE.

P.S.—IF YOUR OUTFIT WANTS TO KNOW ABOUT YOUR RECOMMENDATION MAKE A CARBON COPY OF THIS AND GIVE IT TO YOUR HEADQUARTERS.

PIN : 05437-000